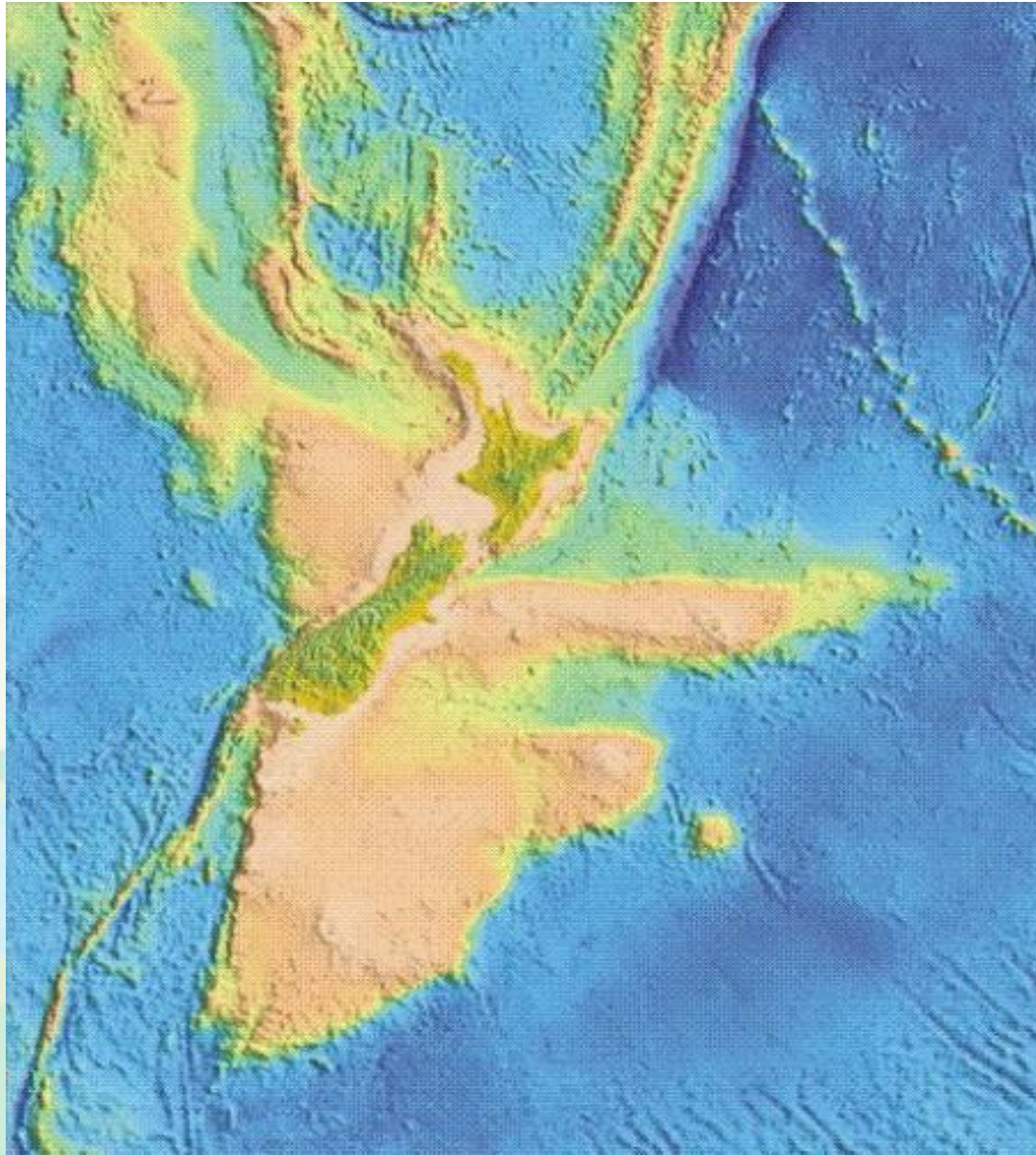


# New Zealand Country Report

Kevin Sweeney, GISP  
Geospatial Custodian  
New Zealand Geospatial Office

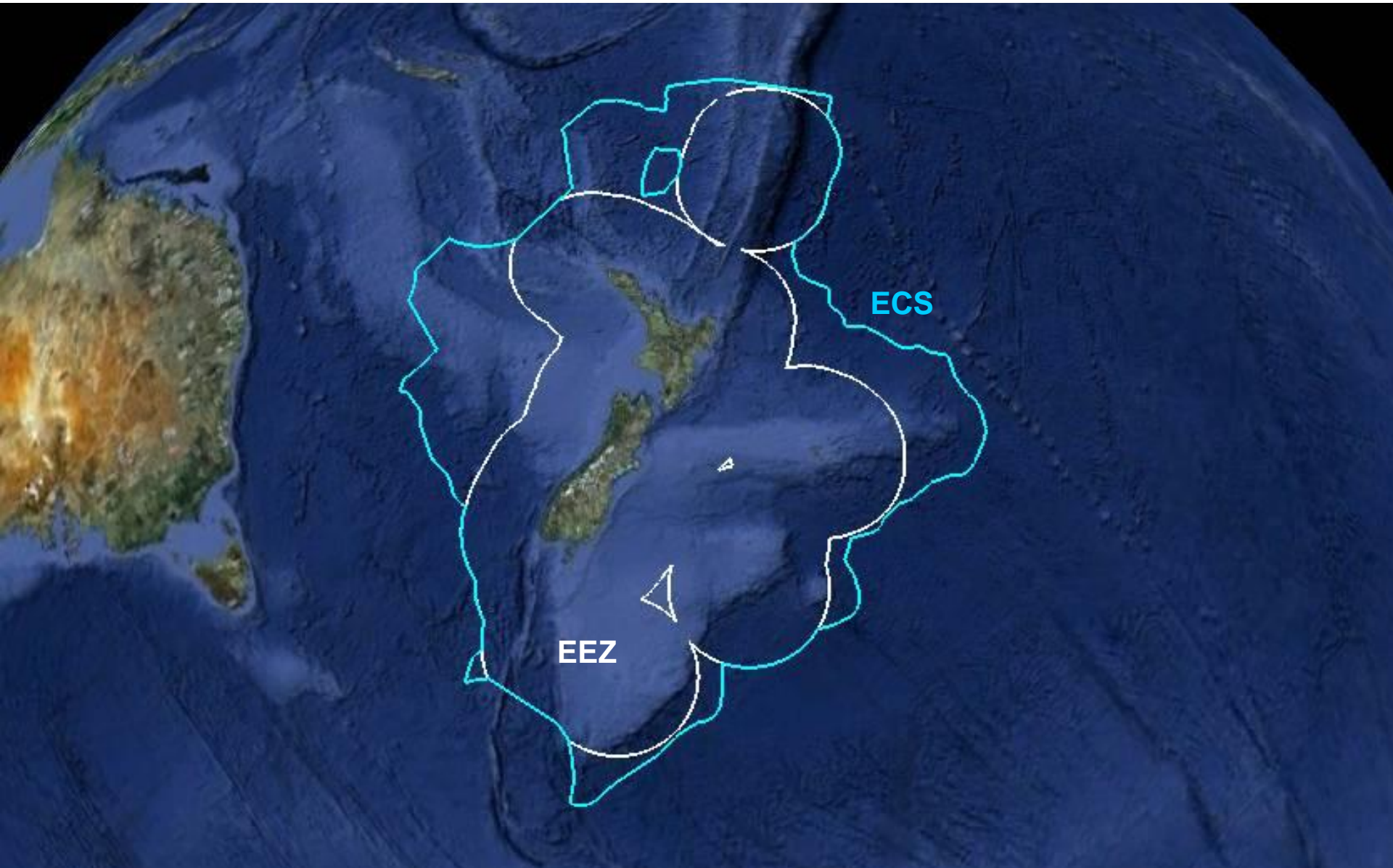


# The New Zealand Context

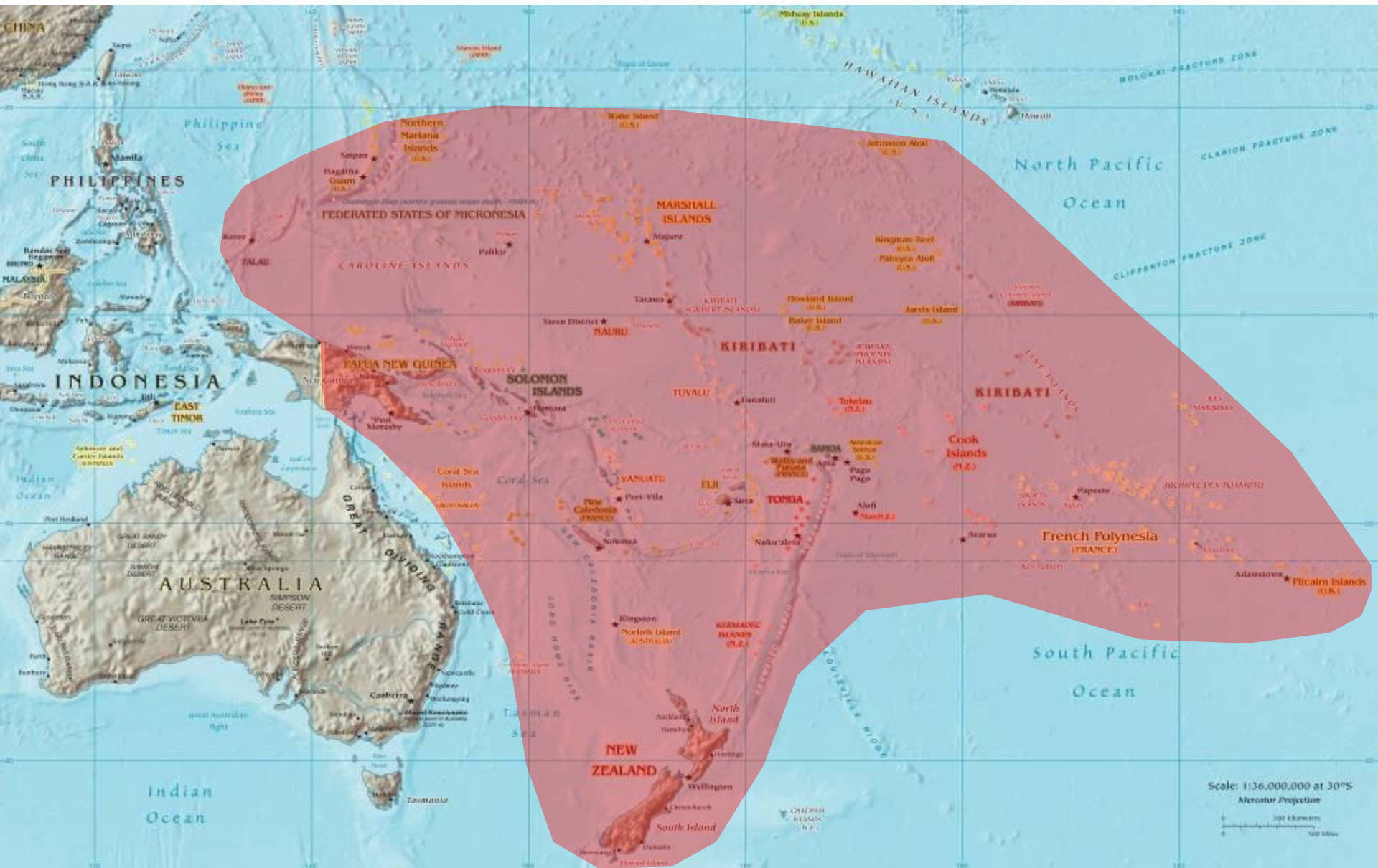




# The New Zealand Context



# The New Zealand Context





# Contributing to GEOSS: MetService



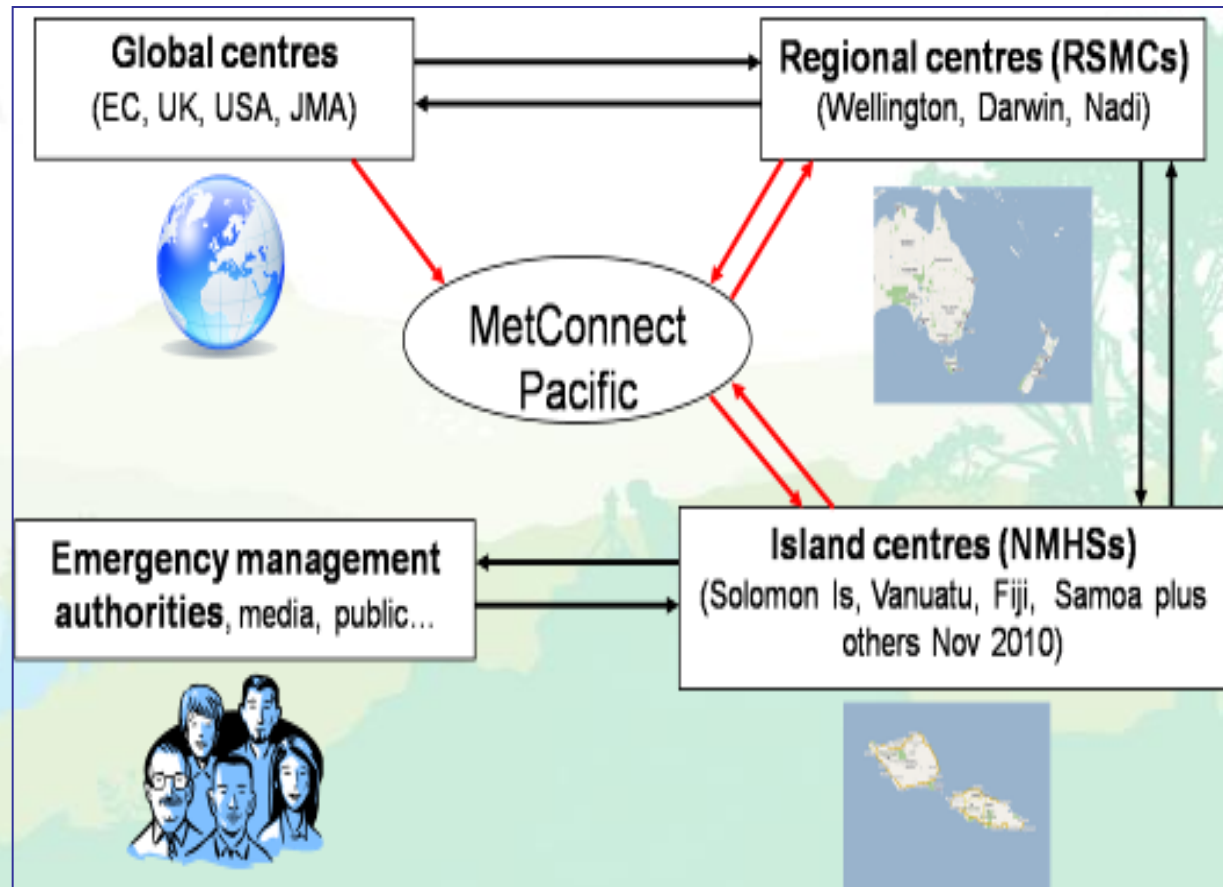
## Data Exchange in South Pacific

- Now: RTH on GTS
- Future: DCPC on WIS

## Critical Gap Filling

- Severe weather forecasting and disaster risk reduction demonstration project (SWFDDP)

- **MetConnect Pacific**



# Contributing to GEOSS: MetService



**MetConnect Pacific**  
SWFDDP

Search

Logged in as: kms01 [Log Out](#)

Global RSMC NMHS Satellite Observations Charts Links Archive Evaluation News Contact

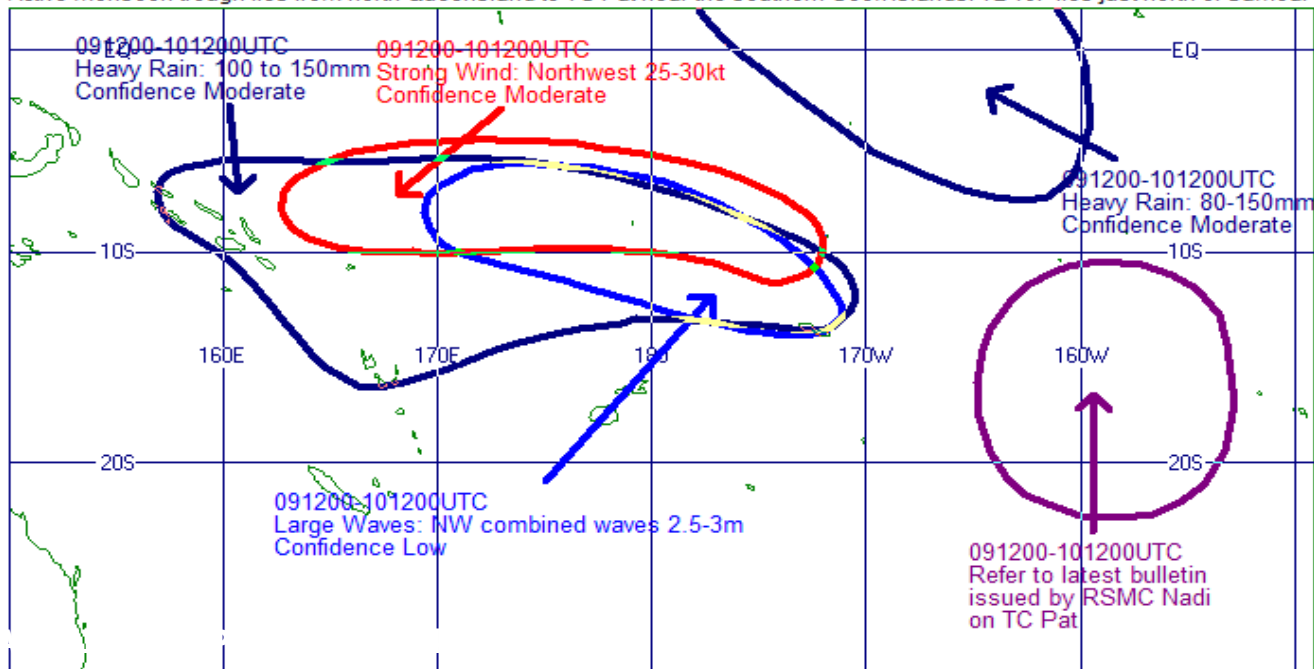
RSMC Wellington RSMC Darwin RSMC Nadi

## South Pacific Guidance

For Severe Weather Forecasting and Disaster Risk Reduction Demonstration Project (SWFDDP).  
Issued at: 02:52 10 Feb 2010 UTC

Valid at: 12:00 09 Feb 2010 UTC

Active monsoon trough lies from north Queensland to TC Pat near the southern Cook Islands. TD10F lies just north of Samoa.



- South Pacific Guidance
  - User Help
  - Guidelines for RSMC
  - Wellington Lead Forecasters
- Marine Warnings
  - THORPEX: Southern Hemisphere
  - THORPEX: WMO
  - Introduction - RSMC

# Contributing to GEOSS: MAF



HOME

ABOUT

PRIVACY

BIOSECURITY NEWS

QUESTIONS

REGISTER |

igovt

Log on

What is igovt?

For help call **0800 4 FOLNZ**

**0800 4 36569**

MONDAY - FRIDAY 8am - 5.30pm

SATURDAY 10am - 2pm

MY CONTACT DETAILS

FARM DETAILS

PEOPLE

MB-7272-0369

2236.3 Hectares

Pastoral

Blocks

Brancott Road, RD2, Ble... 1142.7 Ha Pastoral B001

Brancott Road, RD2, Blenheim B001

RD4, Blenheim 1093.7 Ha Pastoral B002

REGISTER

igovt

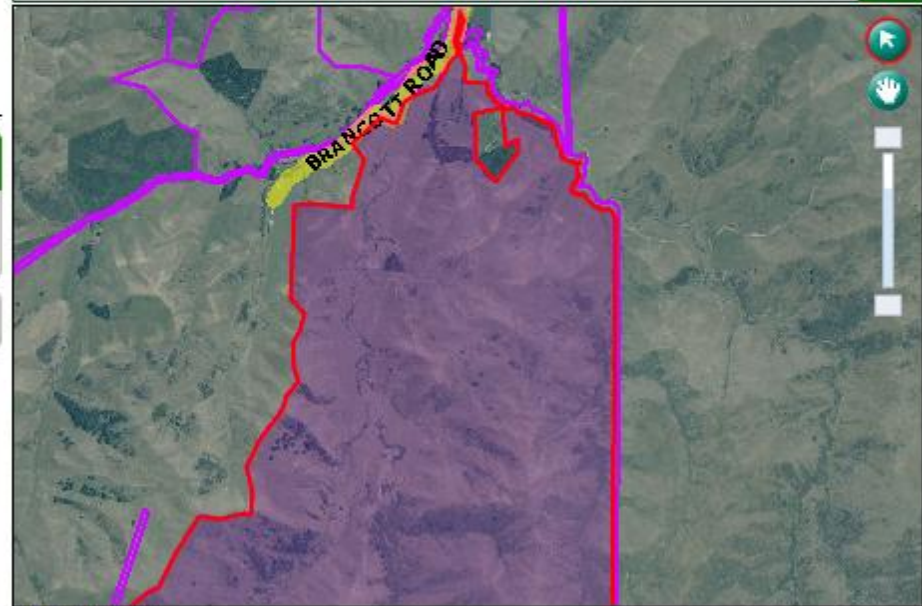
Log on

What is igovt?

REQUEST A CHANGE

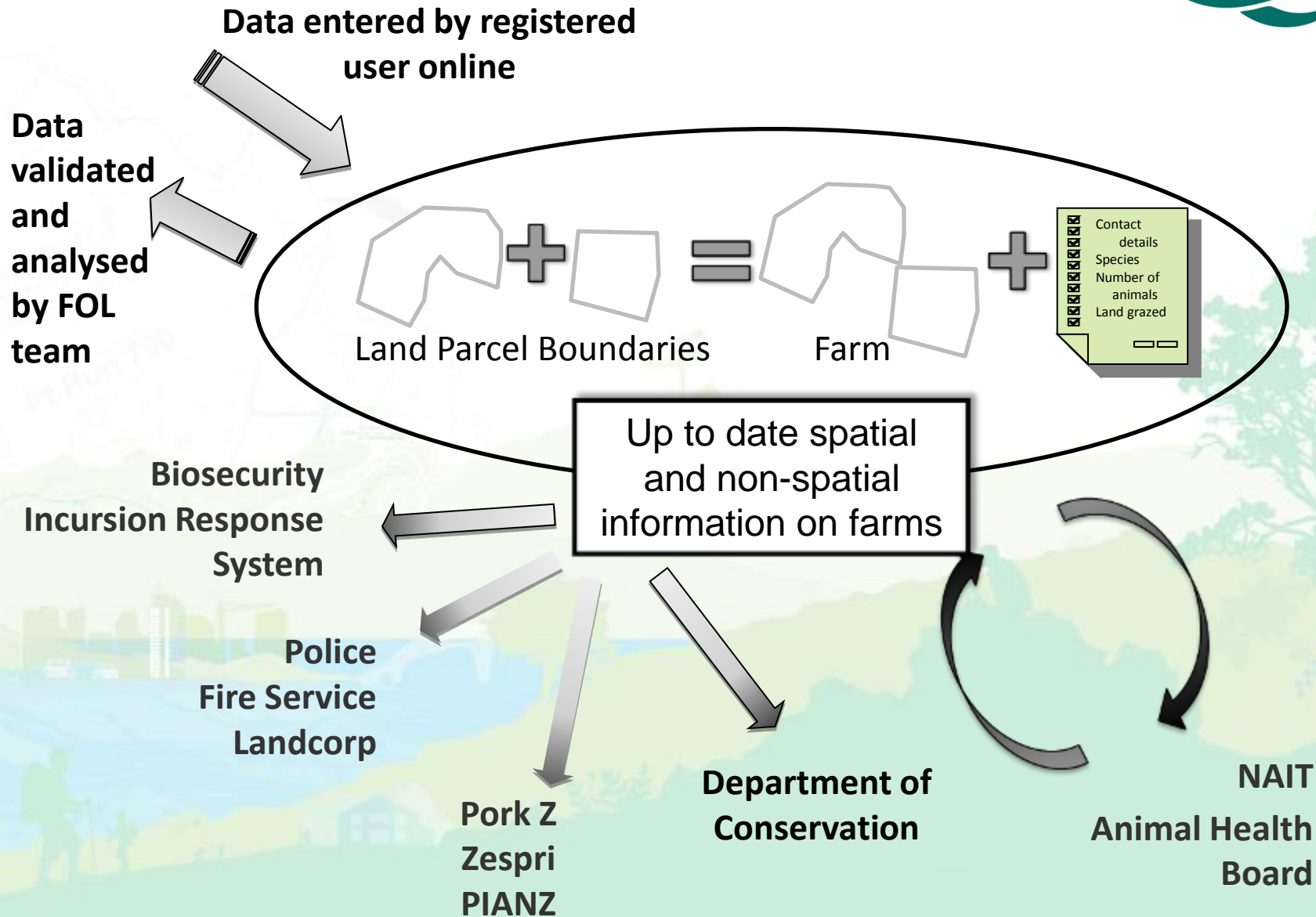
Search Farm ID or Address

GO



[View Full Farm](#)

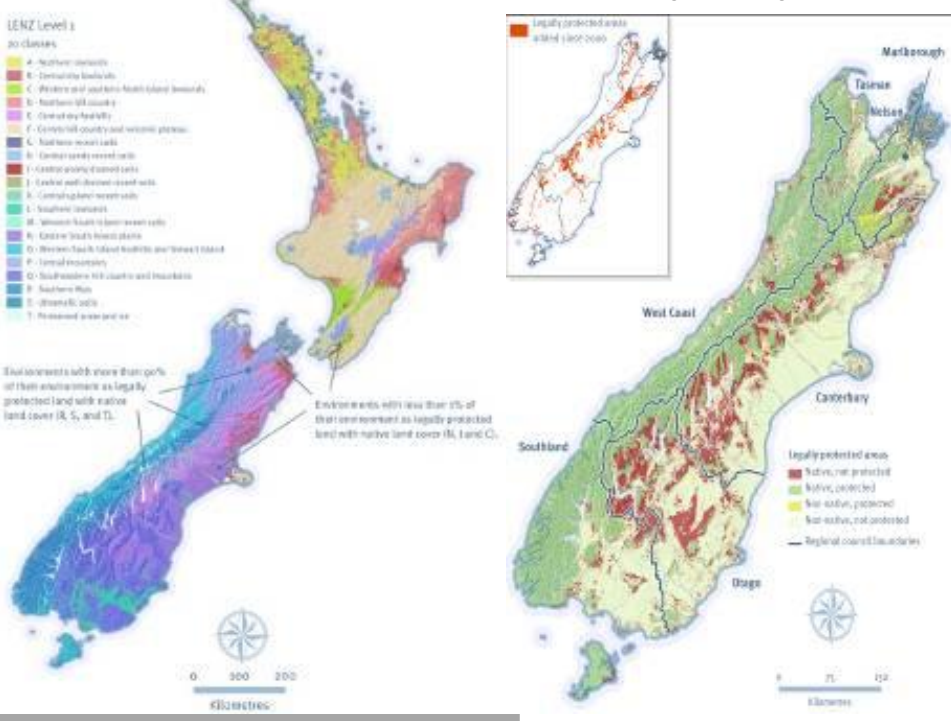
# Contributing to GEOSS: MAF





# Contributing to GEOSS: Ministry for the Environment

## Land Environments (LENZ)



## Erosion Susceptibility



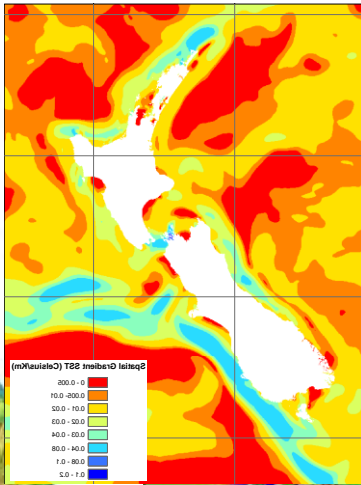
- 1/3<sup>rd</sup> of NZ is dedicated to protecting biodiversity (highest in the OECD)
- Protected areas increased 3.4% between 2006 and 2009

## Land Cover Database (LCDB)

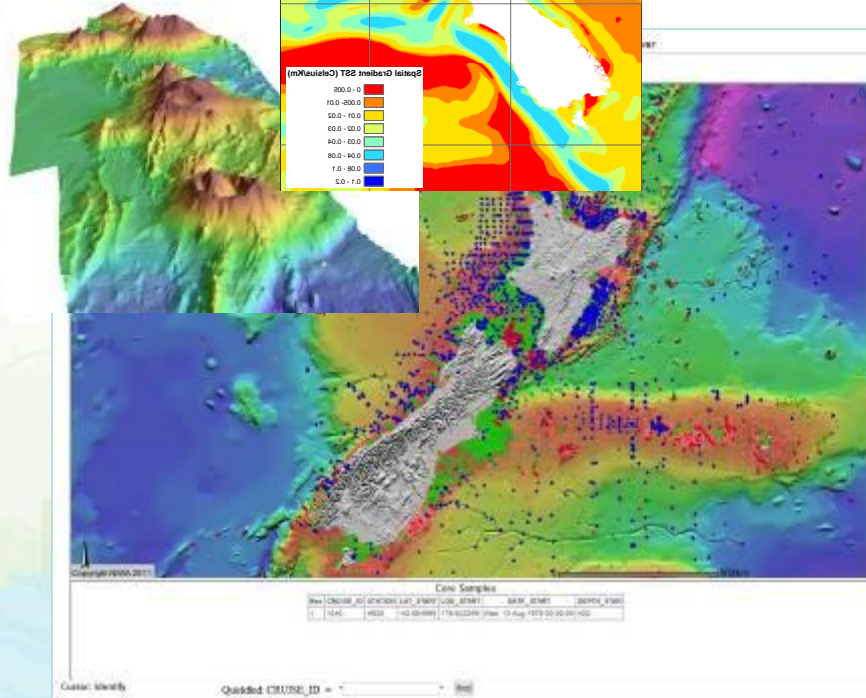
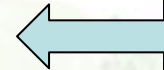
Natural Forest	Planted Forest – post-1989	Grassland – high producing	Cropland – orchards and vineyards	Wetland – open water	Settlements or built-up areas
Planted Forest – pre-1990	Grassland with woody biomass	Grassland – low producing	Cropland – annual	Wetland – vegetated non-forest	Other



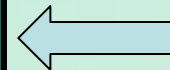
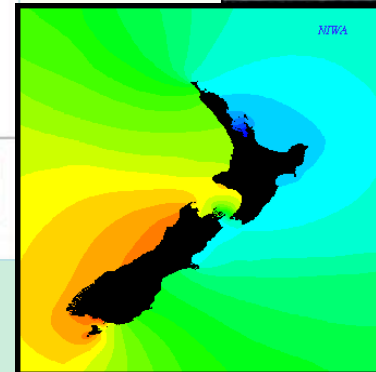
# Ocean Observations and Modelling



**Satellite Data captures ocean dynamics in real-time**



**NIWA Vessel Observations (from NIWA Marine DB) map New Zealand's ocean floor**

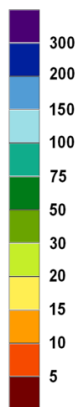


**Supercomputer models currents, waves, tides**

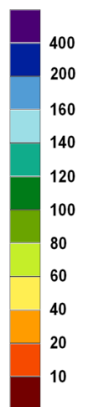


# Sensor Network: Water Resource Maps

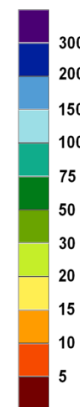
Rainfall (mm)



Anomaly (%)



Rainfall (mm)



Average Rainfall,  
9am 31/05 to 9am 15/06  
(Based on the historical average)

Rainfall Anomaly,  
9am 31/05/2010 to 9am 15/06/2010

Observed Rainfall,  
9am 31/05/2010 to 9am 15/06/2010



# Contributing to a Global SDI



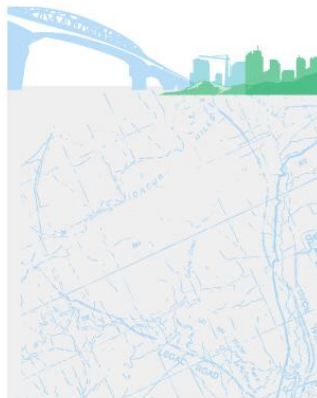
**Spatial marketplace**  
Demonstrator project  
discover • innovate • publish

UNDERSTANDING OUR GEOGRAPHIC INFORMATION LANDSCAPE  
**A NEW ZEALAND GEOSPATIAL STRATEGY**

NEW ZEALAND GEOSPATIAL OFFICE



**SPATIAL DATA  
INFRASTRUCTURE  
COOKBOOK**  
V.1 – 5 JULY 2011



www.geospatial.govt.nz | www.linz.govt.nz

New Zealand Government

**GEODATA.GOV.T.NZ**

**Geodata.govt.nz**

Search for data or other resources

Browse data or other resources

Describe the data or other resources you hold

Home » Geodata.govt.nz

**Geodata.govt.nz**

Welcome to geodata.govt.nz service to find out how to access information is information that

sal

This paper seeks Cabinet's consent to release information to boost economic growth and improve public sector efficiency. It also proposes to strengthen the role of Land Information New Zealand (LINZ) to help achieve this goal.

**NZGOAL.**

Home | Quick Guides | Review and Release Process | Common questions | Blog | About | Contact

## The New Zealand Government Open Access and Licensing framework. NZGOAL for short.

Welcome to NZGOAL

With NZGOAL, the New Zealand Government has adopted the Creative Commons licences. Creative Commons Aotearoa New Zealand is pleased to be able to bring you this beta site on all things NZGOAL.

Download Welcome to NZGOAL as PDF



### Quick guide for agencies

Grab a quick overview of NZGOAL, covering its purpose, scope, how it works, its relationship with data.govt.nz and its status. This guide enables officials to rapidly absorb the essence of NZGOAL.

Read More



### Online review and release process

NZGOAL includes a review and release process for agencies to follow when



### Quick guide for users

Those wishing to re-use government material can grab a quick overview of what NZGOAL means for them, including how it can help them, why licensing is important and how they can ask for material to be released.

Read More



### Common questions

NZGOAL covers a good deal of legal and technical ground. Here you'll find answers to common questions. If you

### A beta production...

This NZGOAL site is being made available as a beta release and is administered by Creative Commons Aotearoa New Zealand. It is not a government owned and operated site. We know it's not yet 100% WCAG2 compliant but we wanted to get something out there that agencies can start using, particularly given the imminence of the awesome Mix and Mash Competition for 2011!

### Key documents

- > NZGOAL (HTML)
- > NZGOAL (DOC)
- > NZGOAL (PDF)
- > NZGOAL Cabinet Paper (PDF)
- > NZGOAL Cabinet Minute (PDF)
- > SSC letter to Public Service CEOs (PDF)

### Recent discussion

# Global New Zealand



*Executive Committee – Oceania Representative*

*Co-Chair – Data Sharing Working Group*



Our geospatial strategy: [www.geospatial.govt.nz](http://www.geospatial.govt.nz)

**Thank you**

