

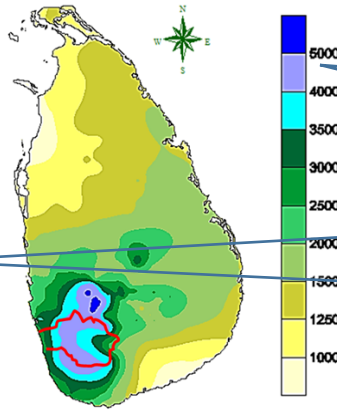
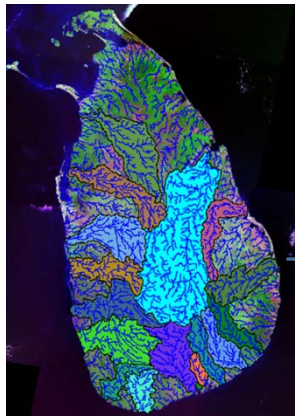
Sri Lanka



Geographical
location of Sri
Lanka

Sri Lanka is highly a flood prone country due to geographical and metrological nature.

- Sri Lanka is consisting of 103 river basins
- Mahaweli is the largest with catchment area of 10,000 square kilometers.
- There are 4 river basins namely Kaluganga, Kelaniganga, Malwathu Oya, and Deduru Oya larger than 2000 square kilometers.
- 25 river basins are identified to be highly vulnerable for floods.



Extensive
River
network

High rainfall
throughout the
country



Ratnapura floods in 1st June 2003

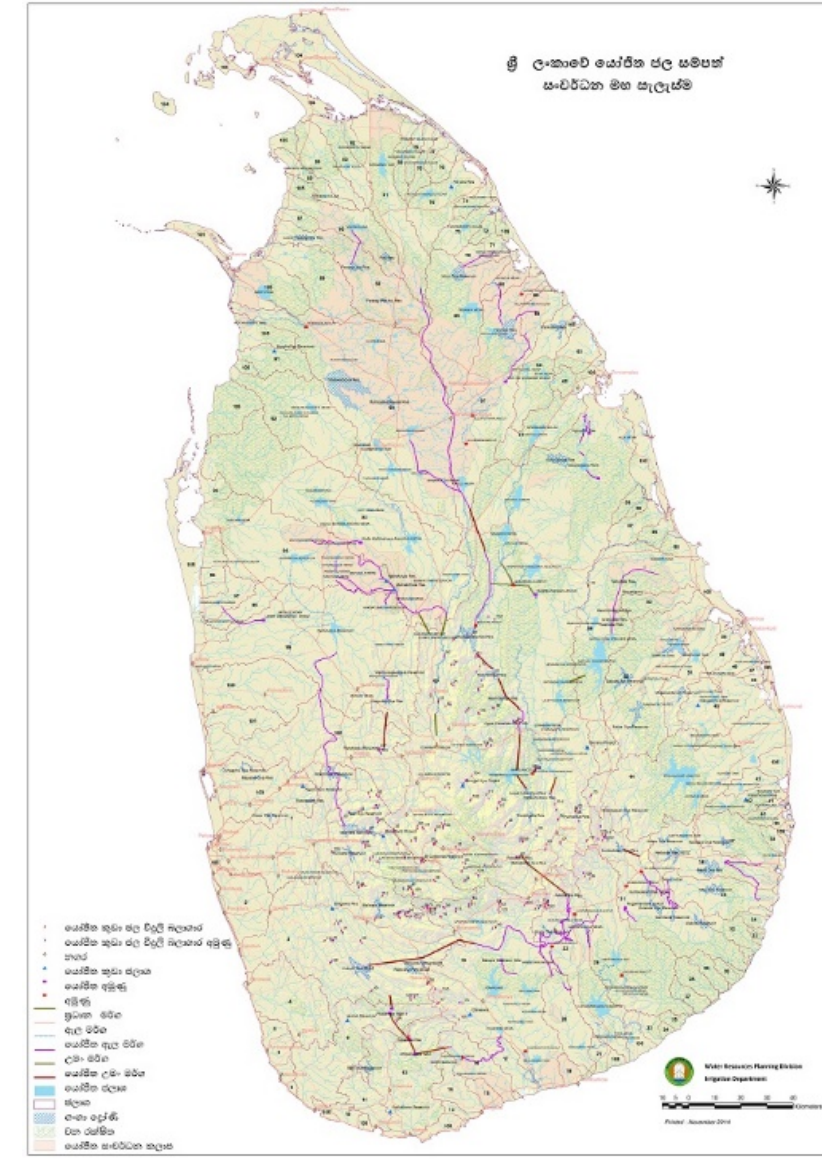
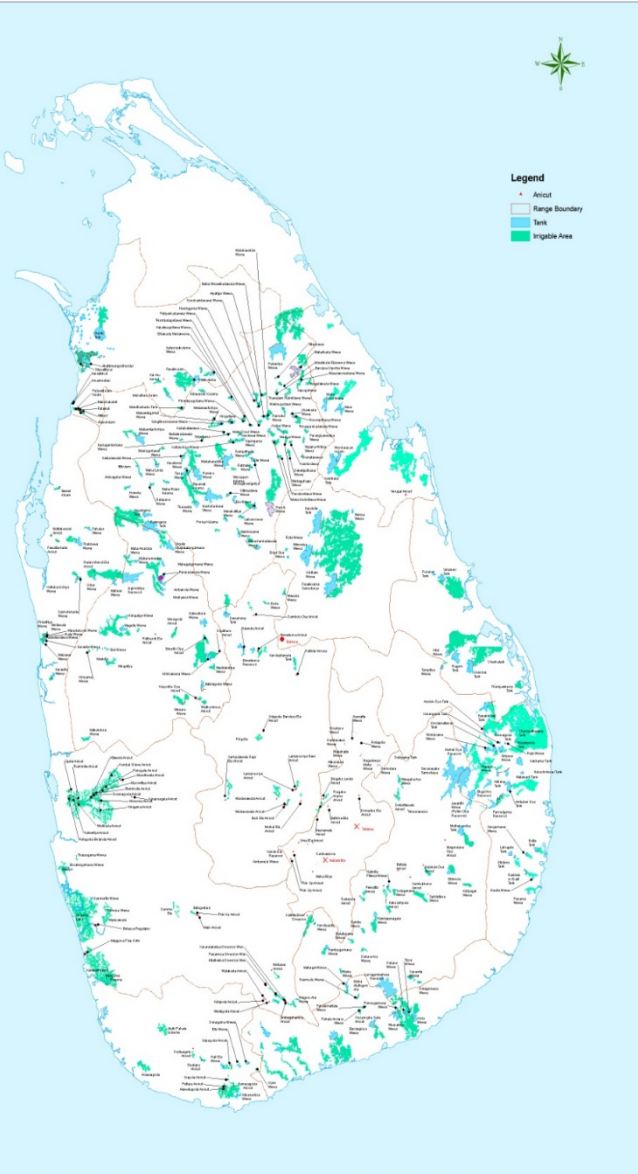
Batticaloa Floods in May 2011

Kelaniganga Floods in May 2016

Ratnapura town June 2014

IRRIGATION DEPARTMENT – SRI LANKA

- The mandate of the department
 - ✓ Water Resources Development and Management of all 103 basins except Mahaweli declared area
 - ✓ Flood Management in all river basins



IRRIGATED AGRICULTURE

The Irrigation schemes in Sri Lanka maintain by four institutions

- Irrigation Department (Inter Provincial Major & Medium Schemes)
- Mahaweli Authority of Sri Lanka (Mahaweli Declared area)
- Provincial Irrigation Department (Provincial Major & Medium Schemes)
- Agrarian Development Department (Minor Schemes)

Irrigation Department Manages

➤ Total Number of Irrigation Reservoirs Schemes	-	229
➤ Total Number of Irrigation Anicuts	-	101
➤ Total Number of Drainage schemes	-	13
➤ Total Number of Lift Irrigation Schemes	-	04

Total Extent of cultivable extent under the Purview of Irrigation Department	-	302,600 ha
--	---	------------

Drought Condition in 2016/17 Cultivation

➤ Total Extent available for cultivation	-	302,600 ha
➤ Extent cultivated for this season	-	215,700 ha
➤ Cultivation affected due to shortage of Water	-	73,200 ha
➤ Cultivation can be saved	-	142,500 ha

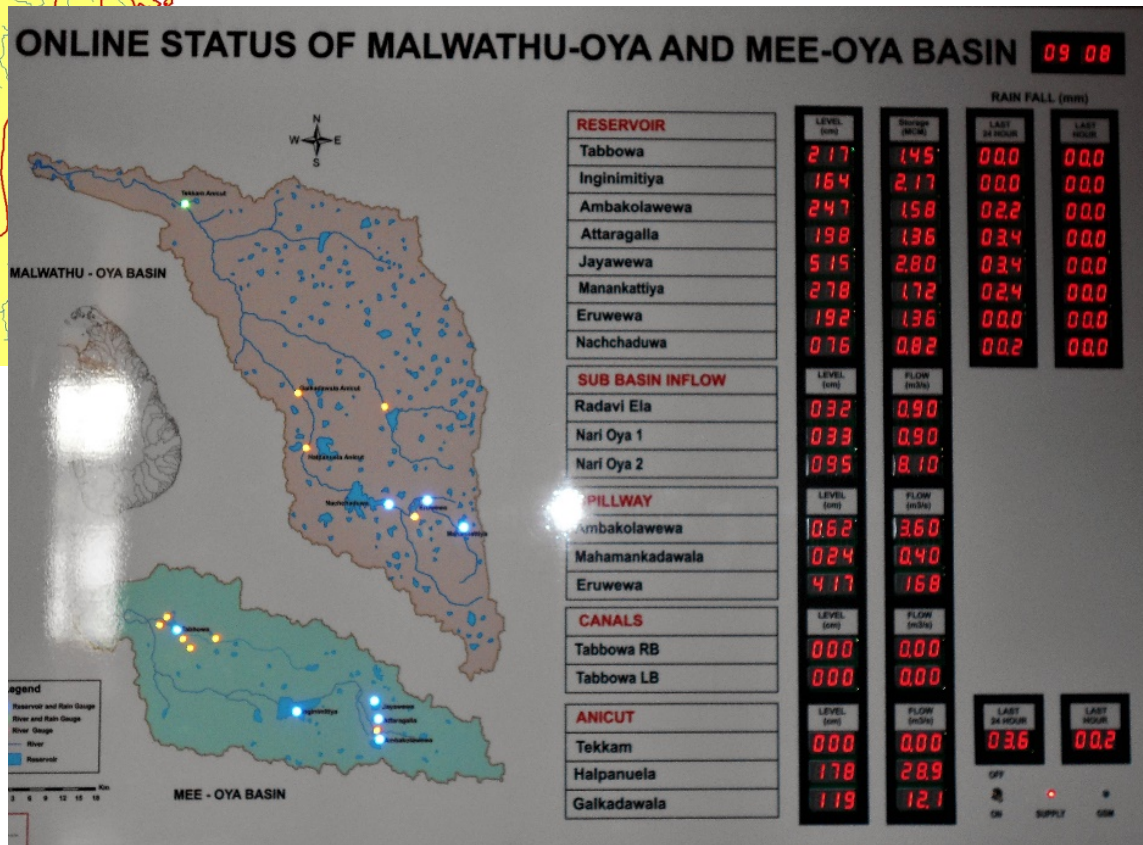
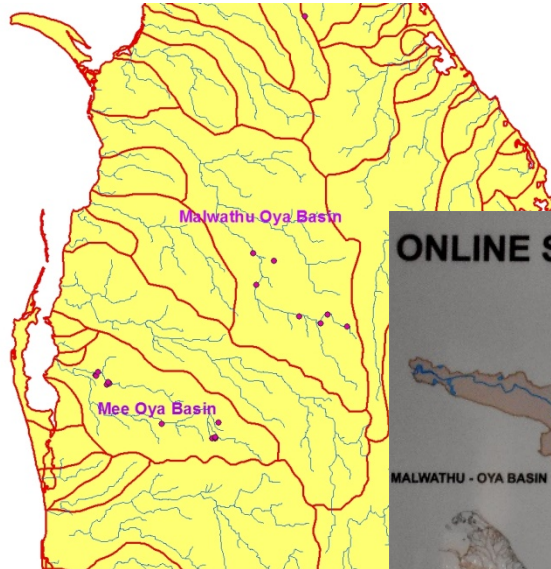
This is only 47% of the total extent available under the purview of the Irrigation Department

The Water availability in the Reservoirs are 27% of the total storage available

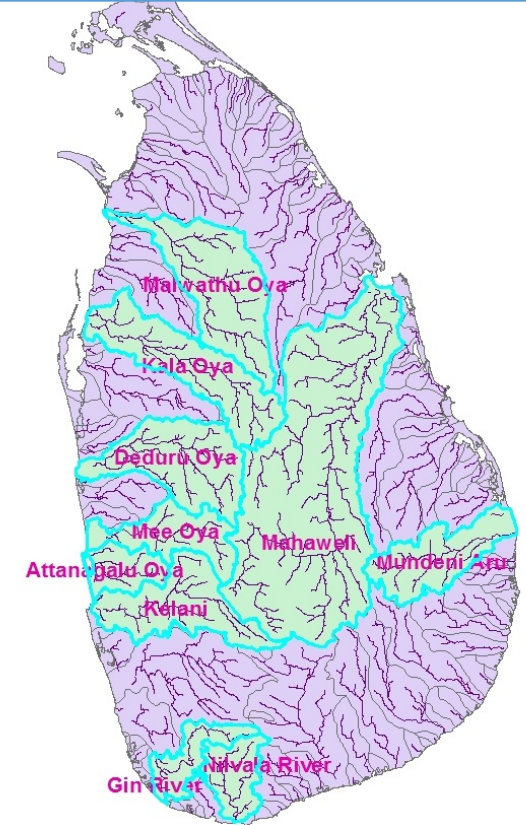
Present Projects

Just started as a Pilot Project – Malwathu oya & Mee Oya River Basins

Under this pilot project Rainfall data, Reservoir Water Level, Discharge data of Canal & River flow data is updated every minute and depicting at the Manager's room in a digital board and in the website

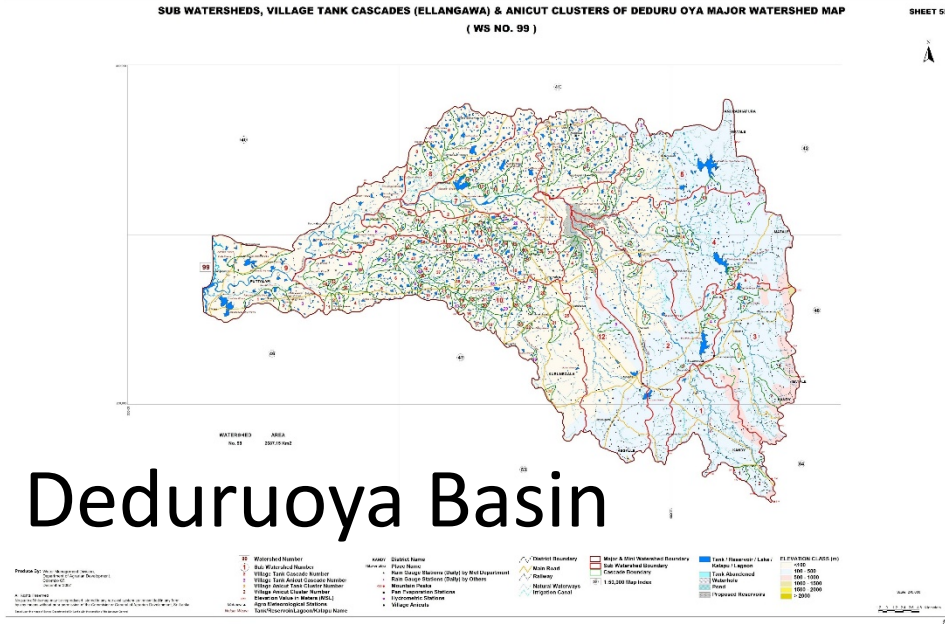


River Basins under study for Flood Management and Water Resources Development



With the assistance of the World Bank 10 mostly critical river basins are being studying for flood and Drought Management

Future Plan on River Basin Management



- Developing Real Time Observation with model studies to the Deduruoya basin with the assistance of University of Moratuwa, Sri Lanka
- Proposing separate management office for Kelani Ganga Basin as a Pilot program which is a vulnerable basin in Sri Lanka to bring all the stakeholders in one roof

Thank You!