



National Status Report of Myanmar

Ms. Tin Yi

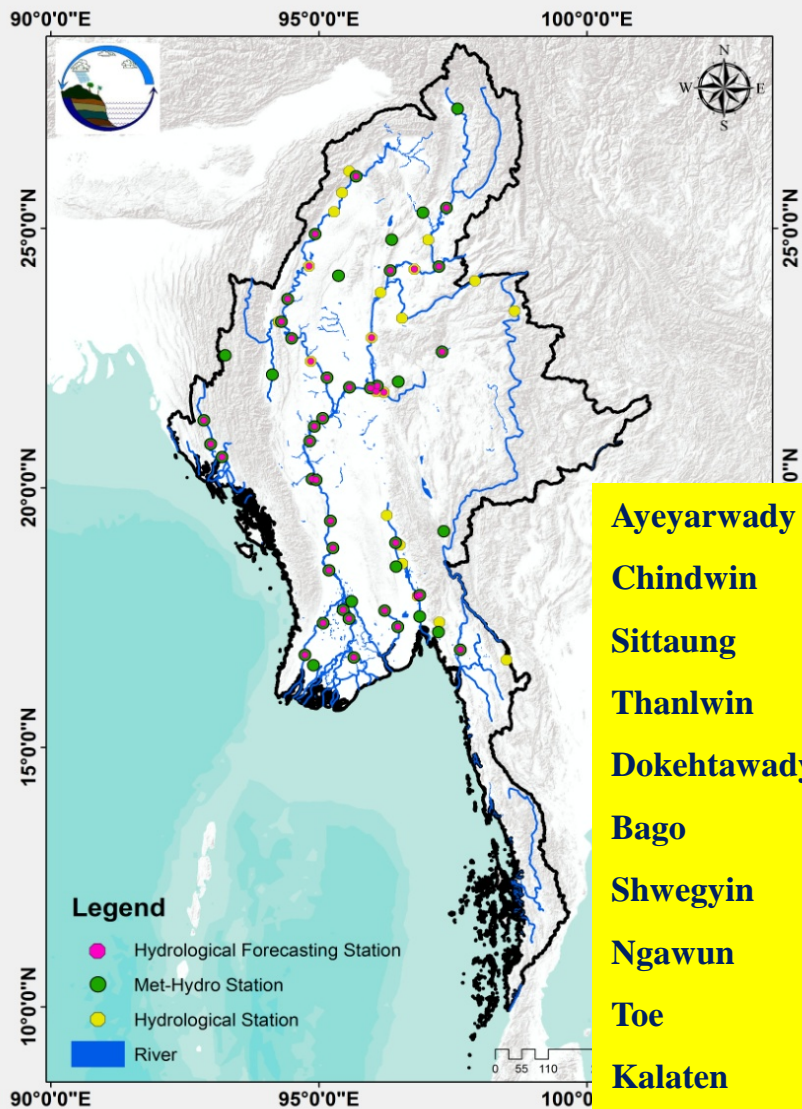
Director

Department of Meteorology and Hydrology

MYANMAR

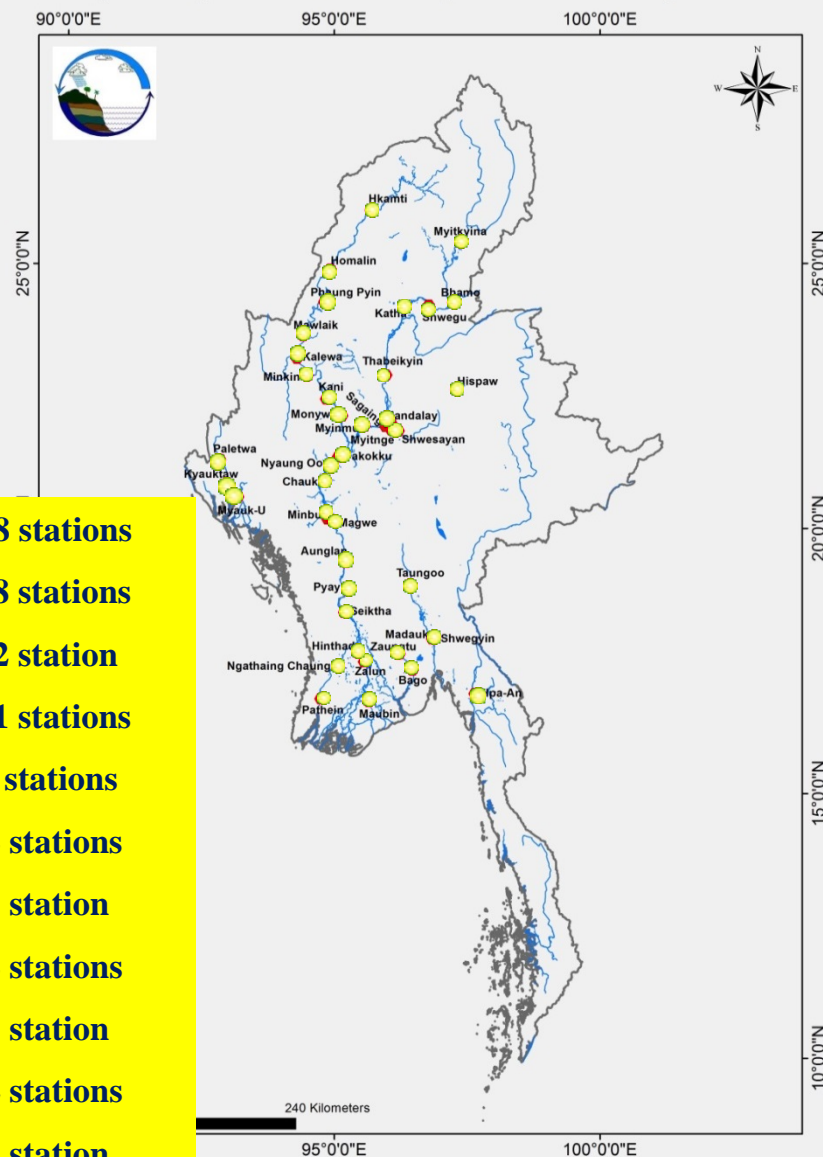
Responsibility of DMH for Flood Forecasting System in Myanmar

70 Hydrological Monitoring Stations

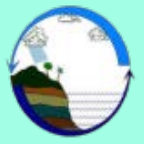
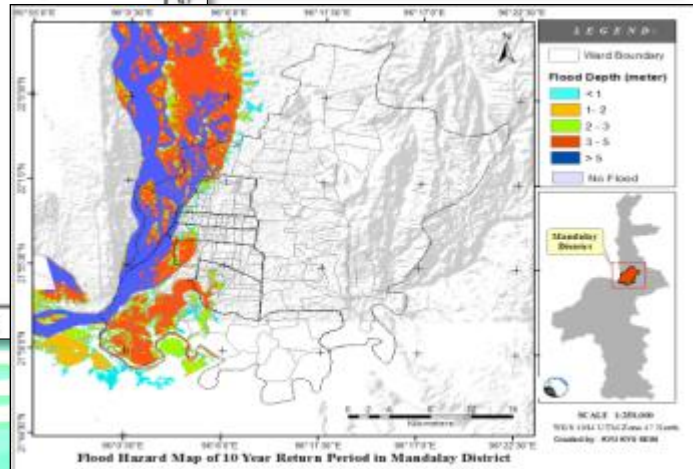
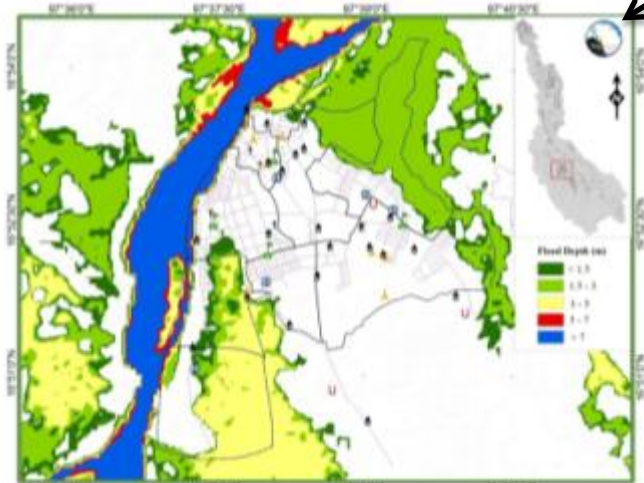
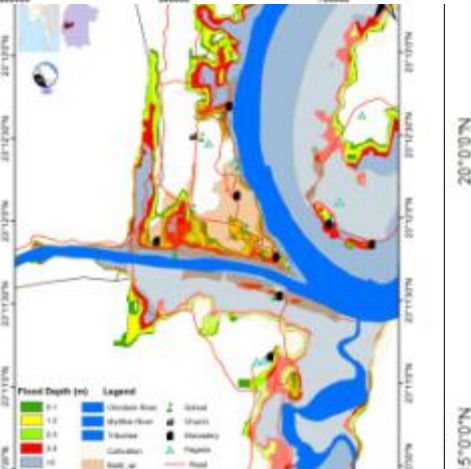
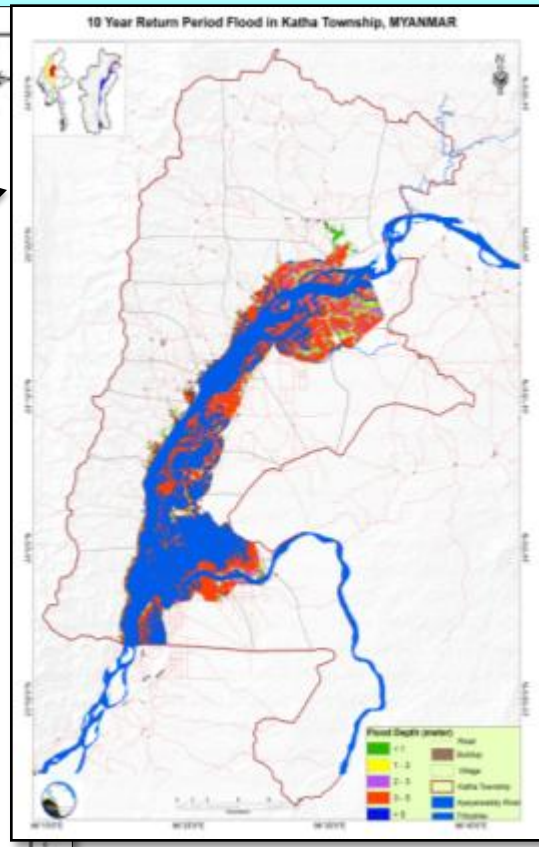
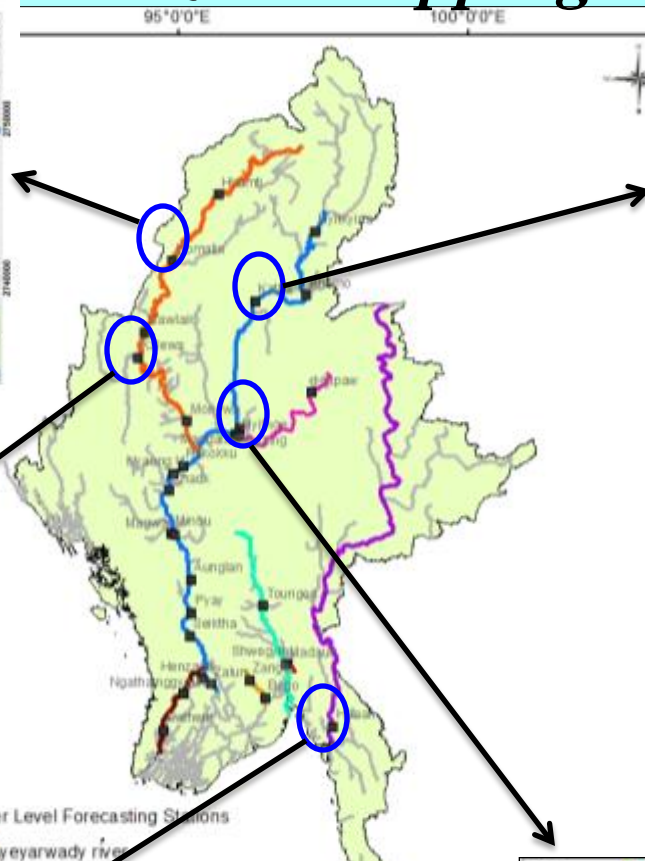
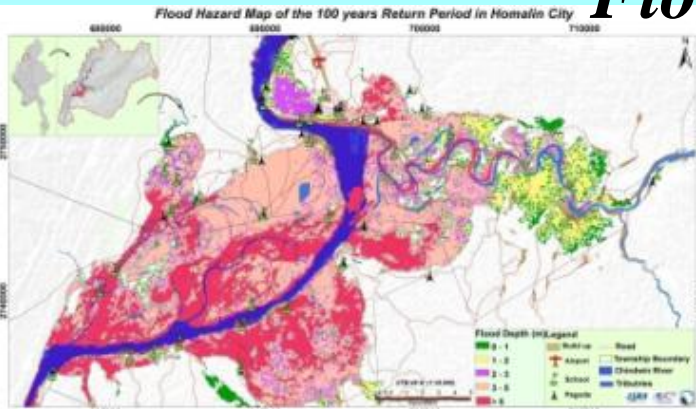


Ayeyarwady	- 18 stations
Chindwin	- 8 stations
Sittaung	- 2 station
Thanlwin	- 1 stations
Dokehtawady	- 3 stations
Bago	- 2 stations
Shwegyin	- 1 station
Ngawun	- 2 stations
Toe	- 1 station
Kalaten	- 2 stations
Lay Myo	- 1 station

Hydrological Forecasting Stations in Myanmar



Flood hazard mapping



TA 8456: TRANSFORMATION OF URBAN MANAGEMENT

(PART II: FLOOD MANAGEMENT)

- Flood Inundation Mapping
- Funding by ADB/ Technical Support by ICHARM & CTI, JAPAN

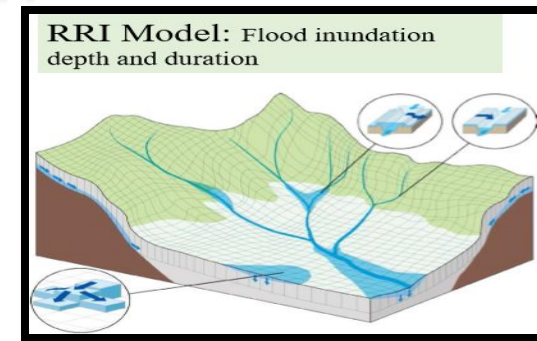


Fig. Flood Inundation Map in Yangon Region
(Flood Scale: 100 yr Return Period)

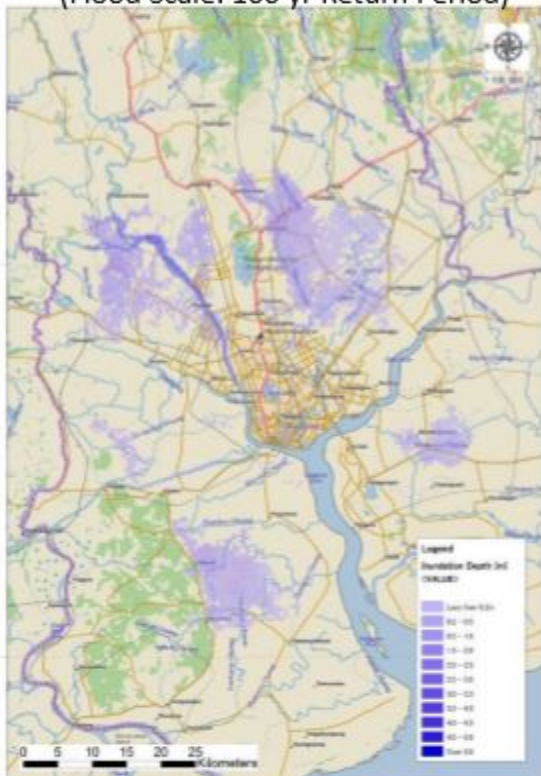


Fig. Flood Inundation Map in Mandalay
(Flood Scale: 100 yr Return Period)

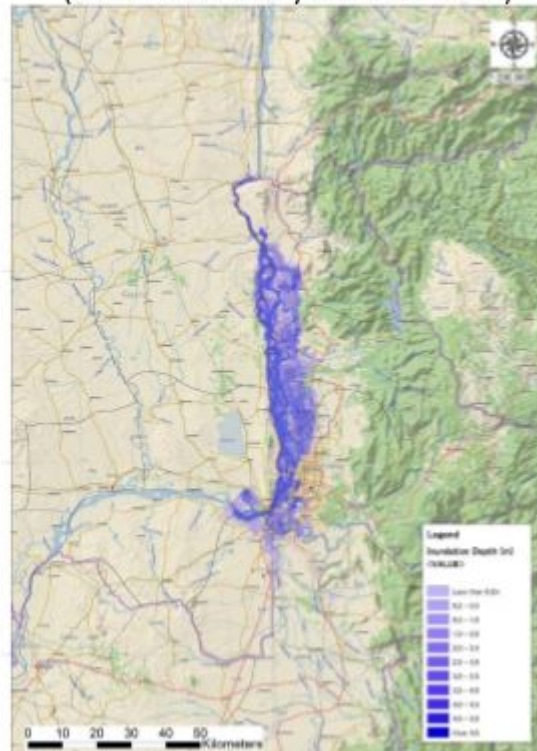
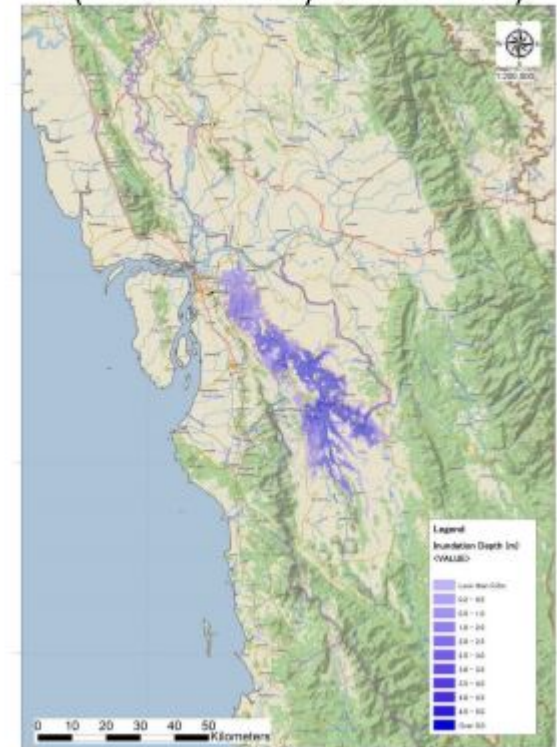
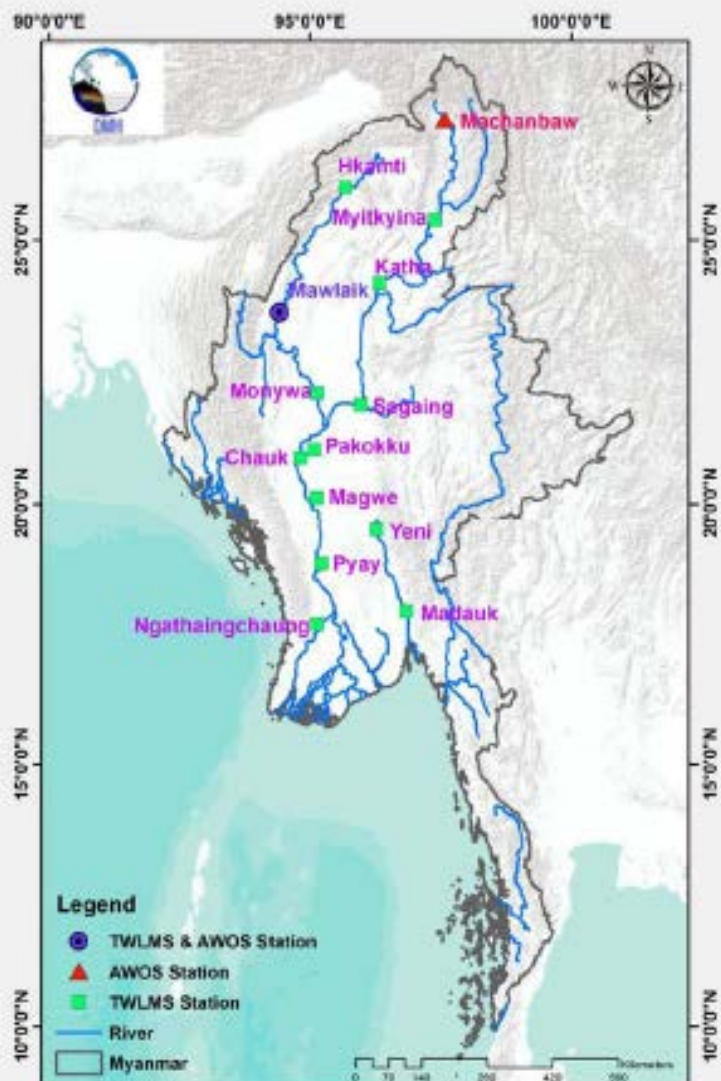


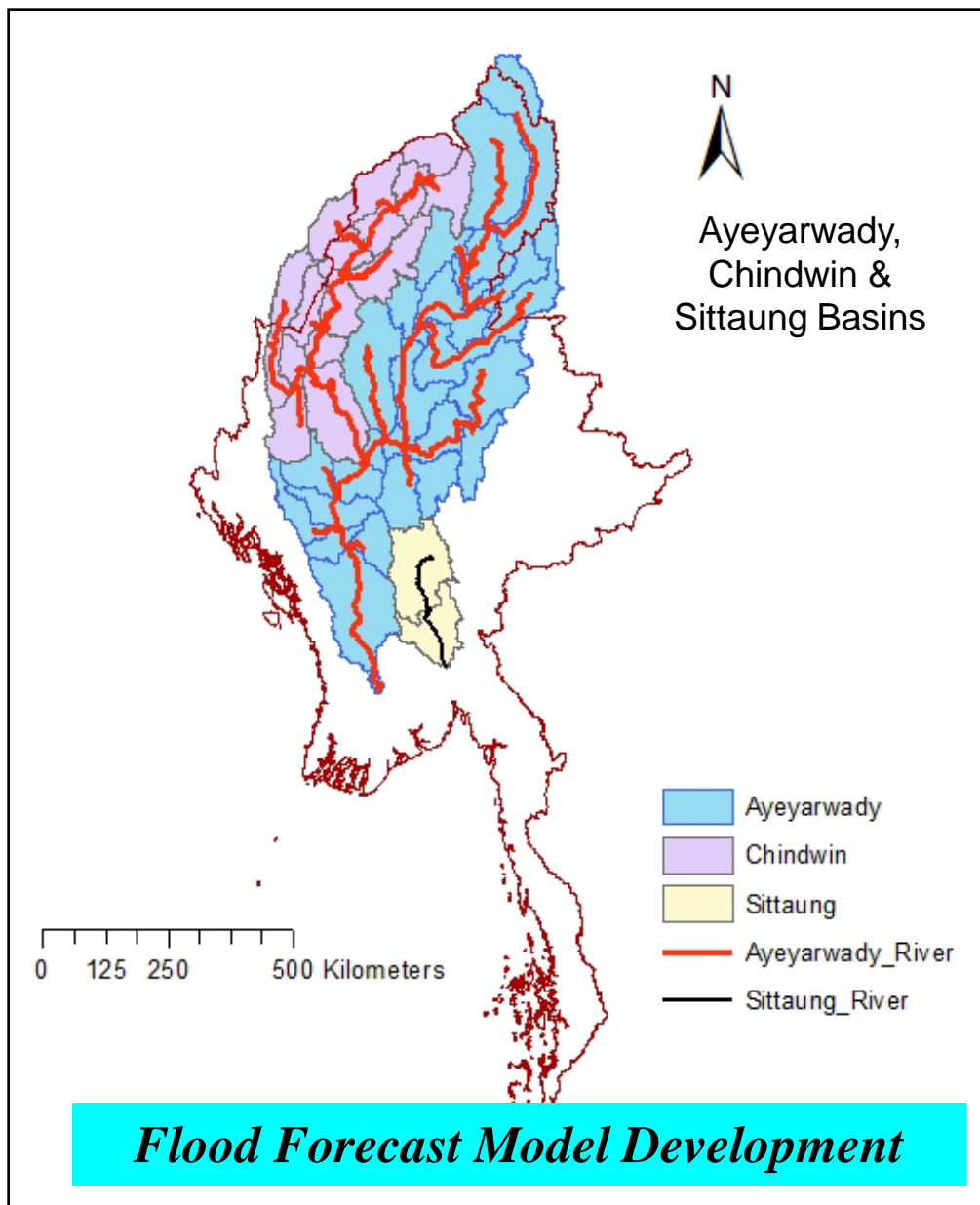
Fig. Flood Inundation Map in Mawlamyine
(Flood Scale: 100 yr Return Period)



Development and Implementation of User-Relevant End-to-End Flood Forecast Generation for Myanmar (Technical support by RIMES and Indian Gov. Funding)



Installation of 13 TWLMS and 2 AWOS



Flood Forecast Model Development

For IFI Implementation Planning of Myanmar

- ❖ DMH would like to cooperate in the IFI Implementation Planning in cooperation and collaboration with the local and international organizations**
- ❖ DMH would like to cooperate in Data and Statistics, Risk Assessment, Risk Change Identification under the IFI Implementation Framework**
- ❖ We, Myanmar will identify the target basin (PDM) by discussing within DMH, with the local/ international orgs. and also learning from Regional Knowledge and Experiences from IFI Workshop on 10th Jan. 2017**
- ❖ We, Myanmar would like to collaborate with development agencies and donors:**
 - For Capacity building framework: knowledge partnership function**
 - For Funding steps: IFI Implementation Planning of Myanmar**

Conclusion

- To discuss within DMH's high level officials, discuss with the local and International depts./orgs. to confirm the PDM
- *DMH will cooperate and collaborate with the local and international organizations for IFI - PDM (Phase-I) and also for IFI Implementation Planning of Myanmar*

Thank you for your kind attention!