



The GEO Biodiversity Observation Network

9th GEOSS AP Symposium 11.01.17 - Tokyo, Japan



Laetitia M. Navarro, PhD

GEO BON Executive Secretary

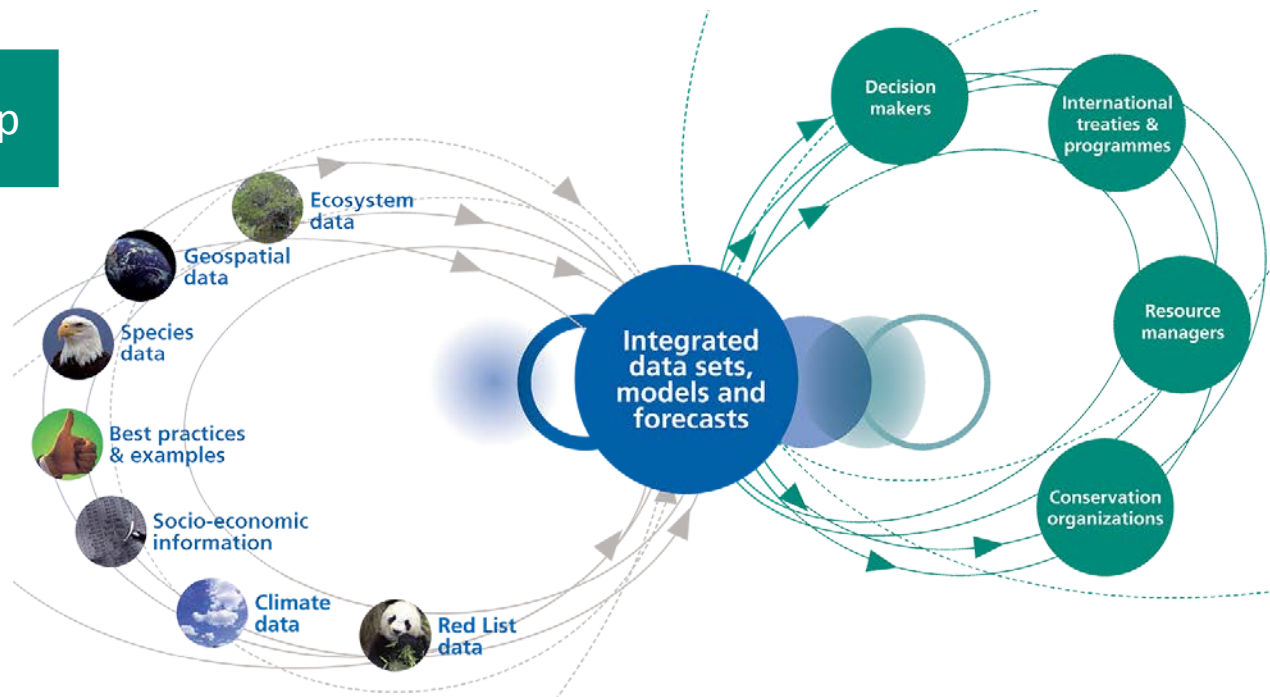


GEO BON in a nutshell

Mission

Improve the **acquisition**, **coordination** and **delivery** of biodiversity observations and related services to users including decision makers and the scientific community.

GEO Flagship



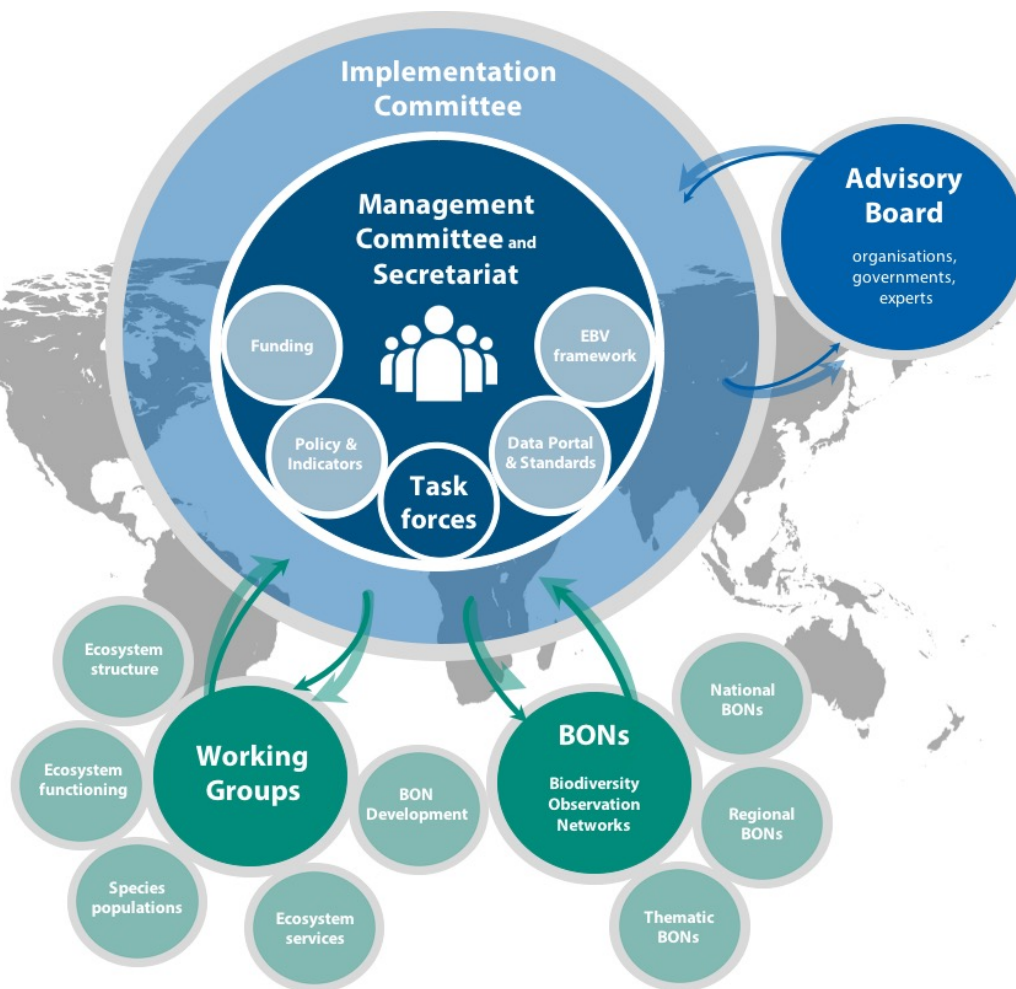
Vision

A **global biodiversity observation network** that contributes to effective **management policies** for the world's biodiversity and ecosystem services.

A Global Partnership

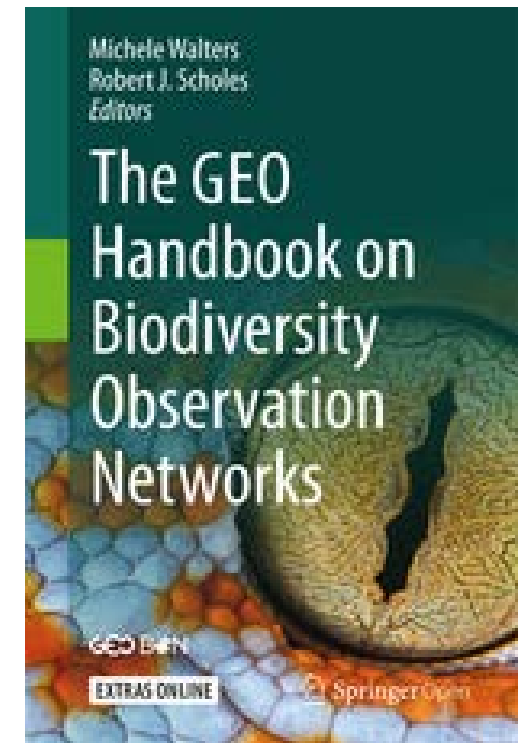
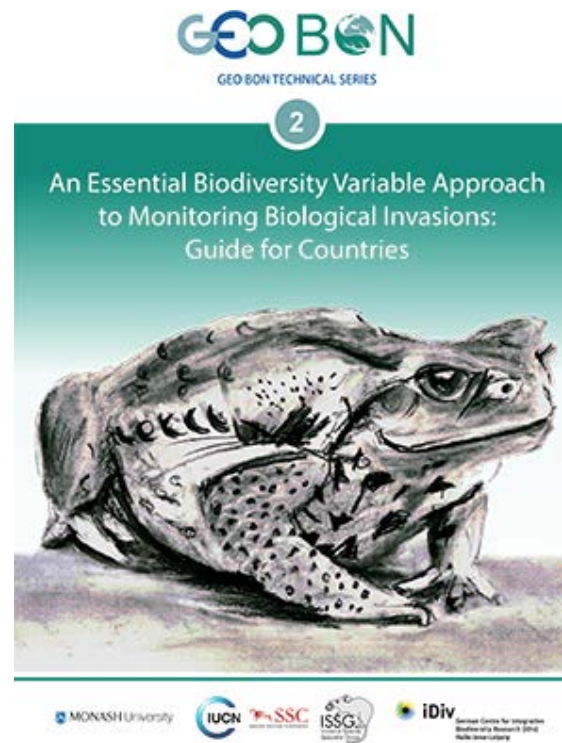
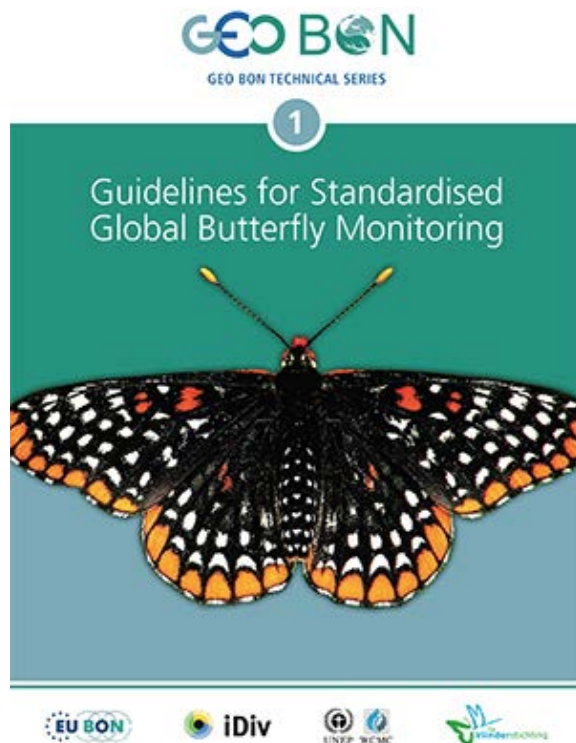


GEO BON governance and core focus

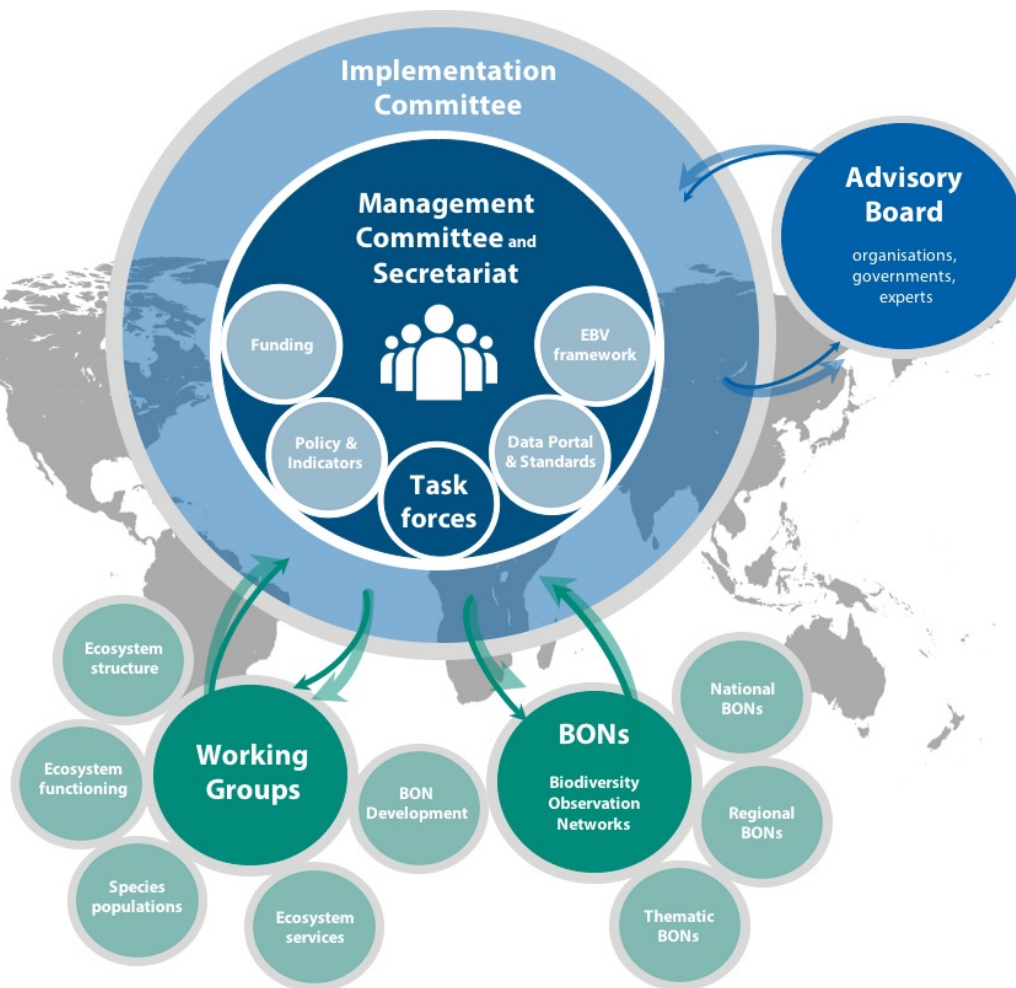


Developing a standard and flexible framework for biodiversity observations

Developing a standard and flexible framework for biodiversity observations (EBVs)



GEO BON governance and core focus



Developing a standard and flexible framework for biodiversity observations

Supporting the development of Biodiversity Observation Networks

Supporting the development of BONs

Mission: Contribute to the **collection** and **analysis** of **harmonised biodiversity observations**, the development of integrated and interoperable **biodiversity monitoring programs**, the development of **data standards**.



GEO BON governance and core focus



Developing a standard and flexible framework for biodiversity observations

Supporting the development of Biodiversity Observation Networks

Producing policy relevant outputs

Policy relevant outputs



EBV based indicators: Integrating in situ and remote sensing observations for open access & real-time indicators

SHI Species Habitat Indices



Essential Biodiversity Variables:
Species distributions
Ecosystem extent and fragmentation

BHI Biodiversity Habitat Index



Essential Biodiversity Variables:
Ecosystem extent and fragmentation
Taxonomic diversity

SPI Species Protection Index



Essential Biodiversity Variables:
Species distributions
Ecosystem extent and fragmentation

PARC Protected Area Representativeness & Connectedness (PARC) Indices



Essential Biodiversity Variables:
Ecosystem extent and fragmentation
Taxonomic diversity

GERI Global Ecosystem Restoration Index



Essential Biodiversity Variables:
Ecosystem extent
Net primary productivity

SSII Species Status Information Index



Essential Biodiversity Variables:
Species distributions
Taxonomic diversity

GEO BON

Global Biodiversity Change Indicators

Model-based integration of remote-sensing & in situ observations that enables dynamic updates and transparency at low cost



Policy relevant outputs

SUSTAINABLE DEVELOPMENT GOALS



Candidate EBV classes



2.4
2.5



Ecosystem structure
Ecosystem function
Genetic composition



3.D



Species populations



6.3
6.6



Ecosystem function
Species Populations
Ecosystem Structure



11.3



Ecosystem Structure



14.4
14.5



Species Populations
Ecosystem Structure



15.1, 15.2,
15.3, 15.4,
15.5, 15.7,
15.8, 15.c



Ecosystem Structure
Species Populations
Ecosystem Function



ありがとう!

For more information:

www.geobon.org

laetitia.navarro@idiv.de

@GEOBON_org

www.geobon.org

• GEO BON German Centre for Integrative Biodiversity Research (iDiv) Halle-Jena-Leipzig, Deutscher Platz 5a,
04103 Leipzig, Germany • info@geobon.org