

# The 5th GEOSS Asia-Pacific Symposium

## GEO Initiatives towards Green Growth in the Asia-Pacific Region

2 - 4. April 2012

NATIONAL MUSEUM OF EMERGING SCIENCE AND INNOVATION



Tetsukazu Yahara

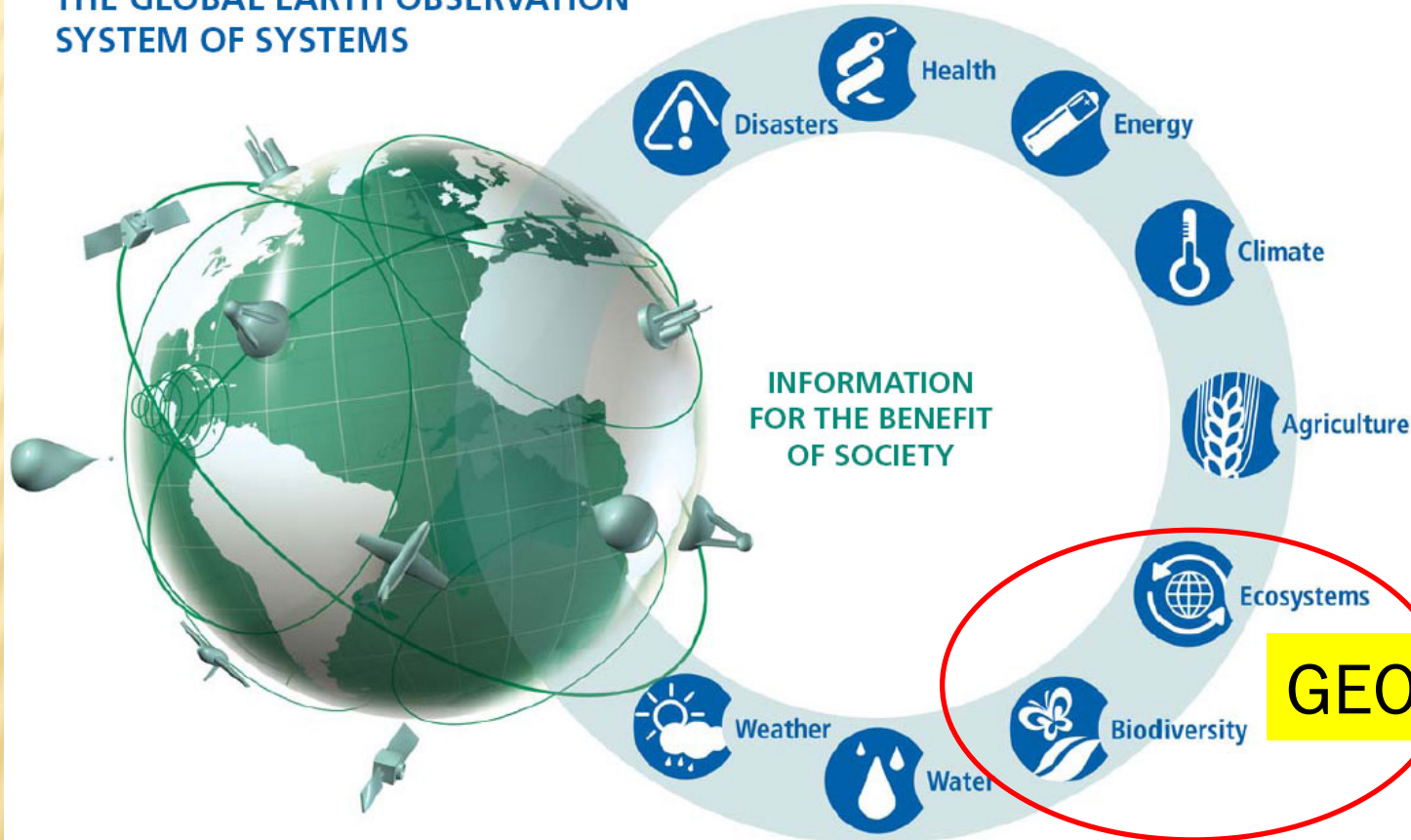
Kyushu University, Japan

# ASIA-PACIFIC BIODIVERSITY OBSERVATION NETWORK (AP-BON)

# GEO: GROUP ON EARTH OBSERVATION

Launched by the G8; its first plenary meeting held in May 2005 in Geneva

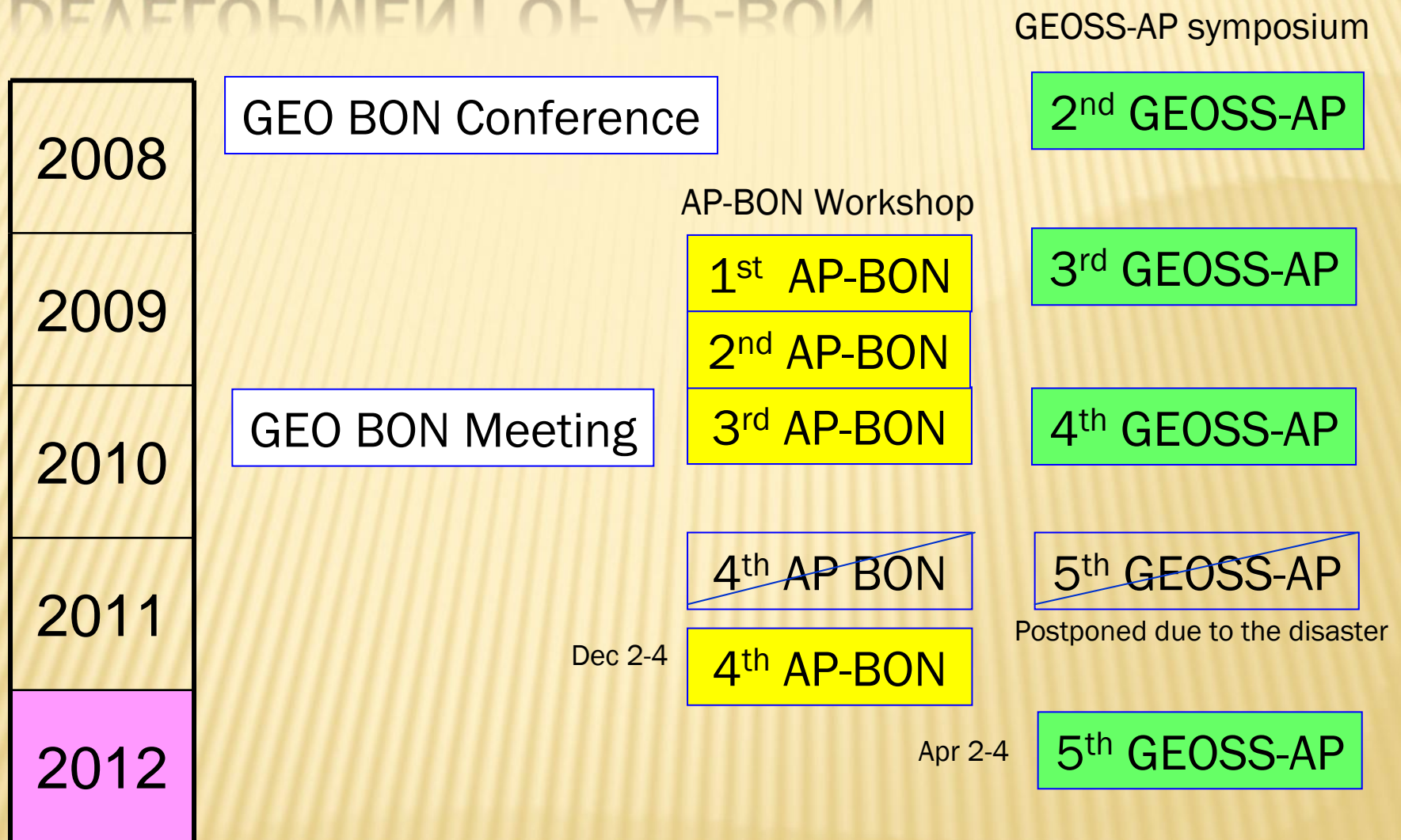
THE GLOBAL EARTH OBSERVATION  
SYSTEM OF SYSTEMS



2005-2015: 10 year implementation plan



# DEVELOPMENT OF AP-BON



MOE project started from July 2011 to support AP-BON

# AP BON WORKING GROUPS

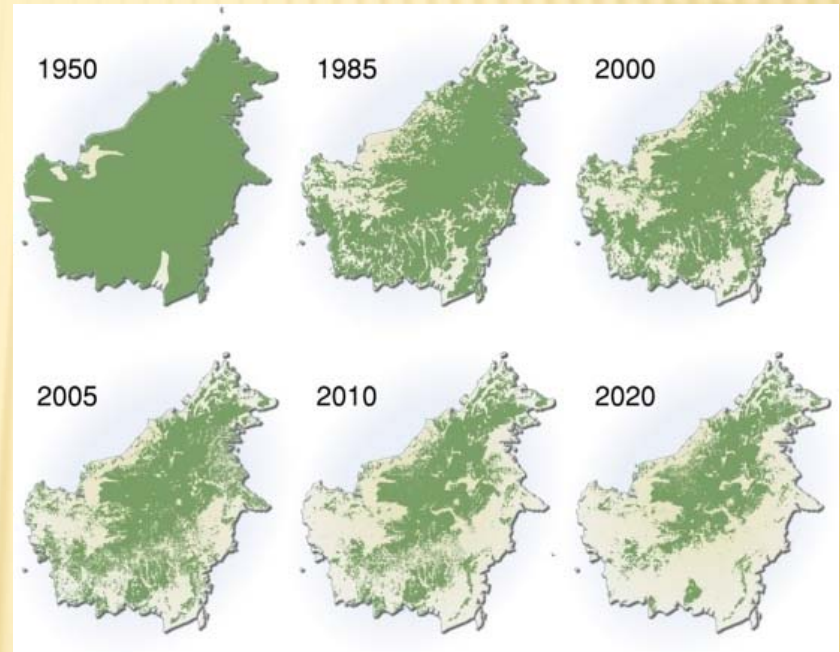
- × 1: Genetics/phylogenetic diversity
- × 2: Terrestrial species monitoring
- × 3: Terrestrial ecosystem change
- × 4: Freshwater ecosystem change
- × 5: Marine ecosystem change
- × 6: In-situ / remote-sensing integration

Draft  
implementation  
discussed  
in 4<sup>th</sup> AP-BON  
workshop



To be discussed in the parallel session

# FOREST LOSS IN SOUTH EAST ASIA



<http://maps.grida.no/region/geoasiap>

Estimates of species/ecosystem services loss are needed

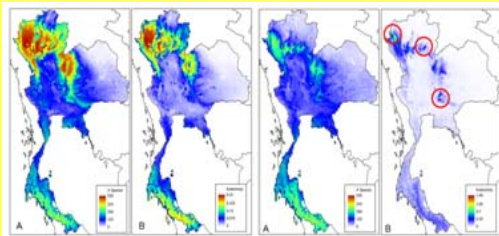


# MOE Strategic R&D 2011-15: themes

- Developing models and tools to observe/assess biodiversity changes in Asia
- Developing models and tools to observe/assess loss of ecosystem services in Asia
- Developing models and tools to identify hot spots and EBSA in Asia

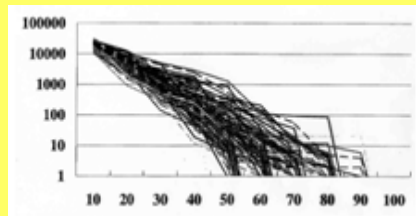
## Theme 2

Gene and species  
diversity changes



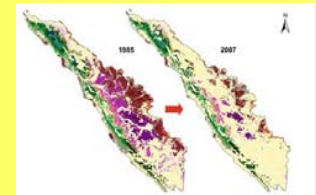
## Theme 1

Modeling bio-  
diversity changes &  
developing policy



## Theme 3-5

Changes in  
forest, freshwater  
& marine  
ecosystem



Contribution to IPBES, GEO BON, CBD, REDD+, & National Strategy

# HOW TO QUANTIFY BIODIVERSITY LOSS?

## ✘ *Collecting ground data*

- + Plot-based approach
- + Specimen-based approach
- + Transect-based approach

## ✘ *Modeling distribution*

- + Niche modeling

## ✘ *Assessment with remote sensed data*

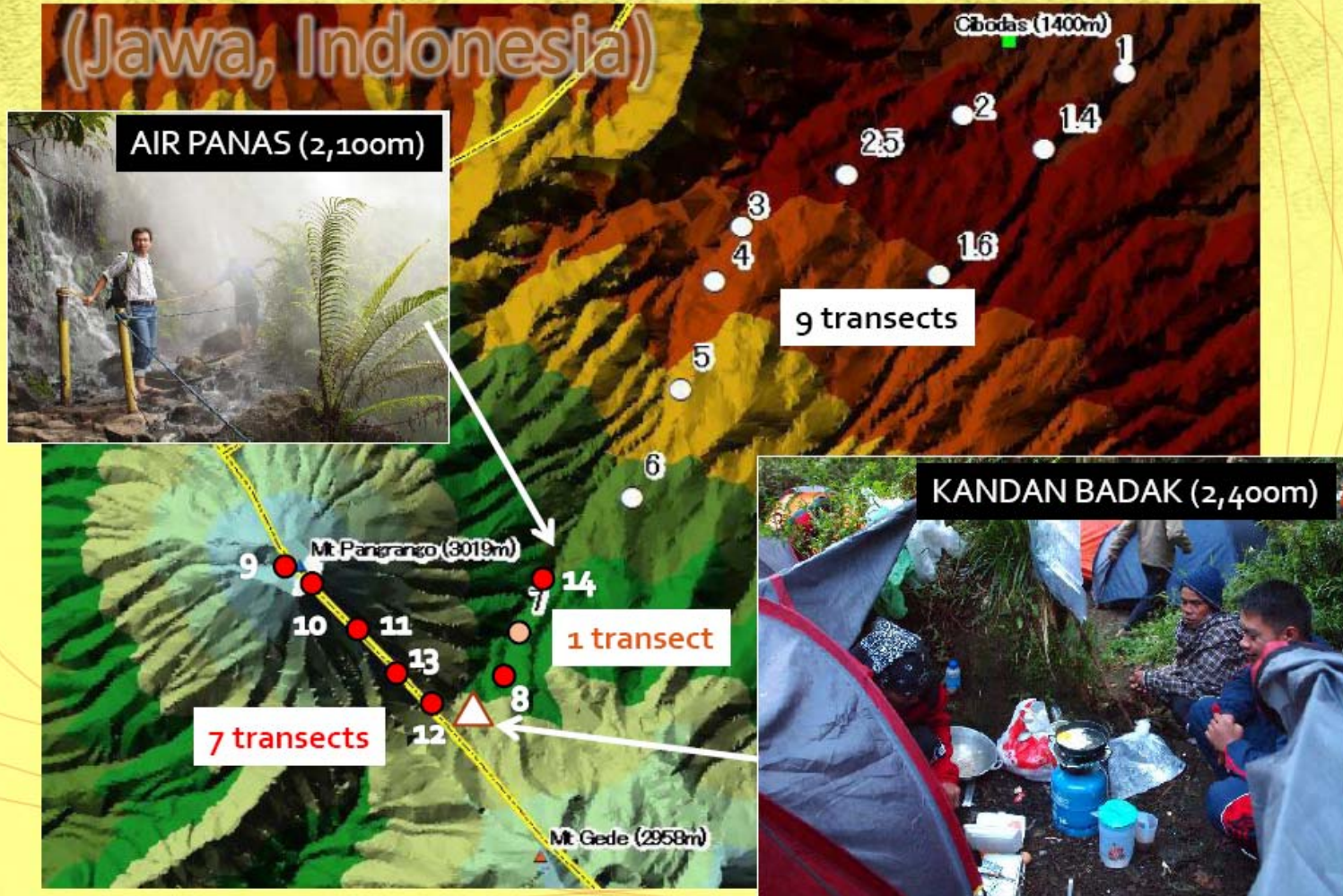
- + Time-series records of land use/climate changes
- + Projection of changes in future

How to  
share/manage/analyze  
/integrate biodiversity  
observation data?



# TRANSECT-BASED APPROACH

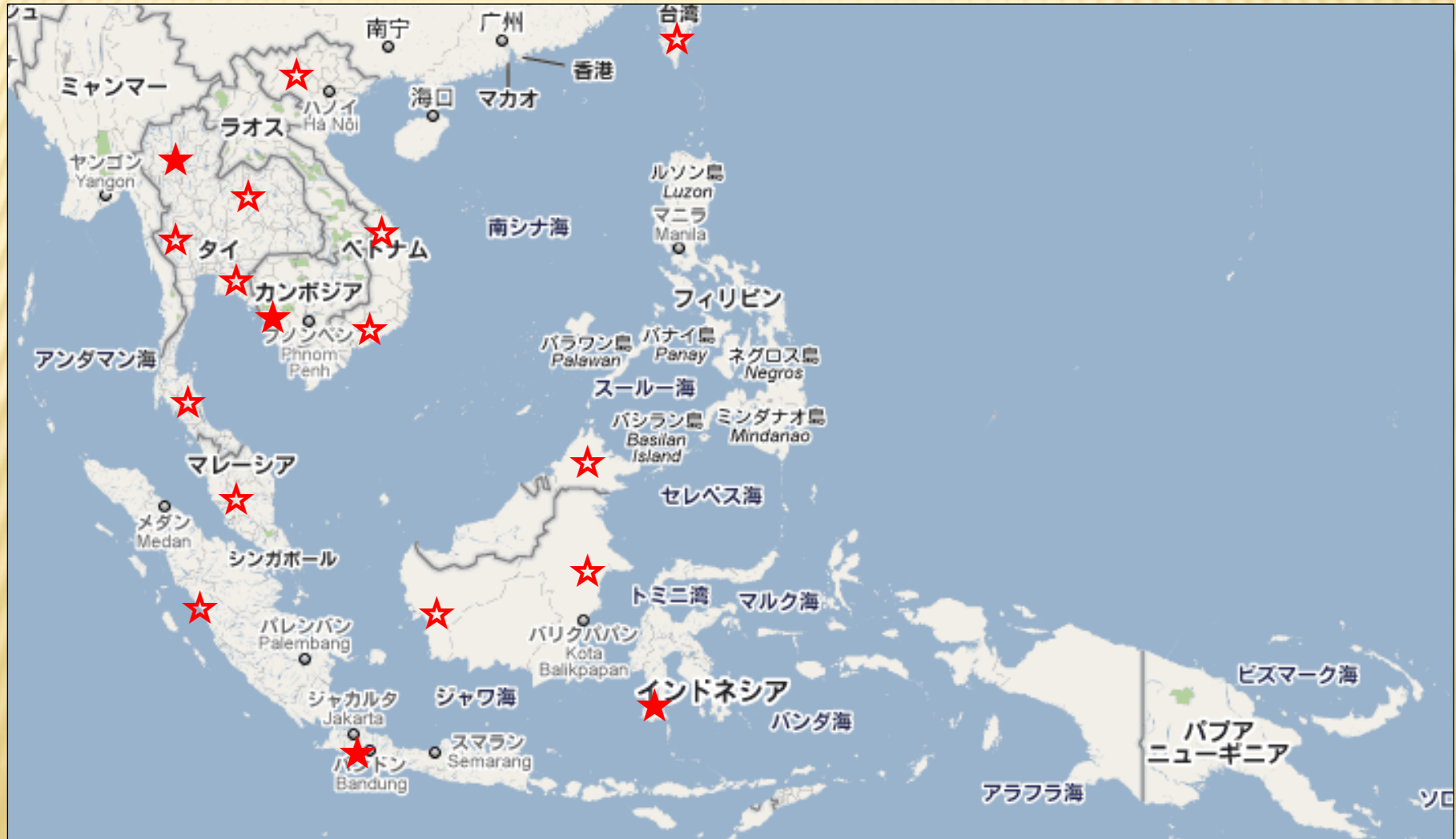
## Gede Pangrango National Park (Jawa, Indonesia)





# CANDIDATE MOUNTAINS FOR TRANSECT SURVEYS

Collaboration of Asian scientists is inevitable



# FUTURE EARTH: A FRAMEWORK TO UNIFY EXISTING BODIES

four Global Environmental Change Programmes

[www.icsu.org/future-earth/home](http://www.icsu.org/future-earth/home)



**FUTURE EARTH**

1991

2008

1980

1986

1996

2001

2013



**GEO BON**

Promoted by  
DIVERSITAS & NASA

all co-sponsored by ICSU

**Toward  
Green Growth**