

# The advanced Land Observing Satellite(ALOS) and JAXA Plan for follow-on missions

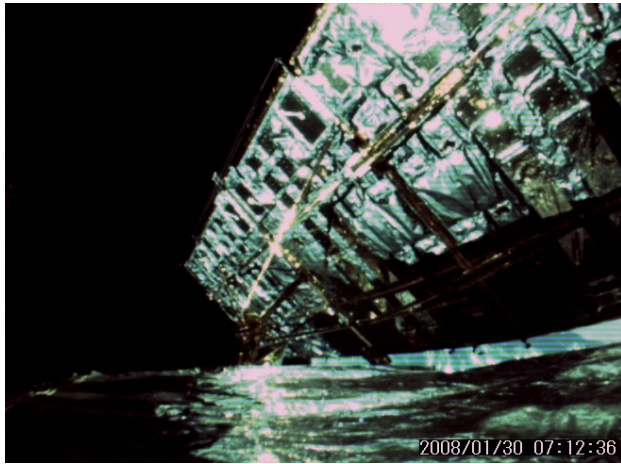


Masanobu Shimada  
Earth Observation Research Center  
Japan Aerospace Exploration Agency

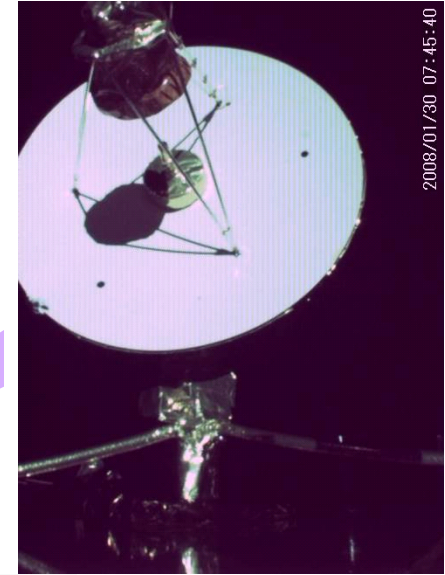
GEOSS meeting, April 15 2008

# ALOS and its pictures

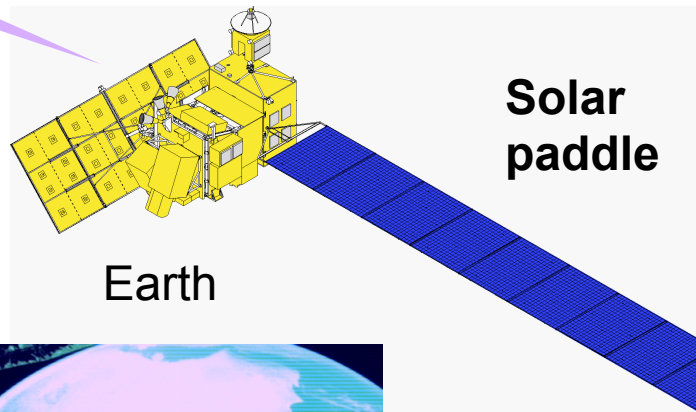
Jan. 30 2008



**PALSAR Antenna  
backside**

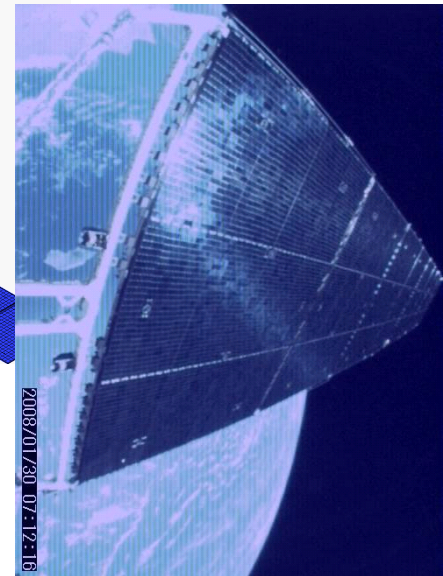
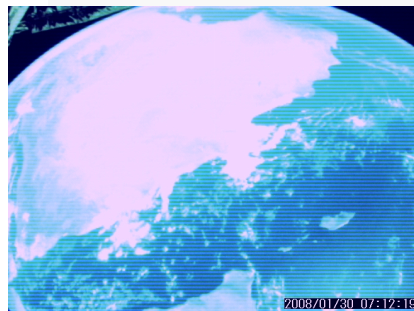


Antenna for  
Inter satellite  
communication

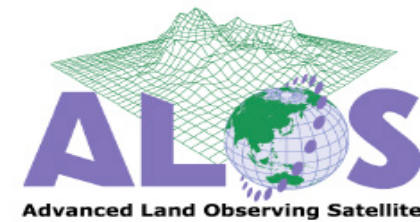


Earth

**Solar  
paddle**



# ALOS operation status (3/3)



Operation status of each sensor

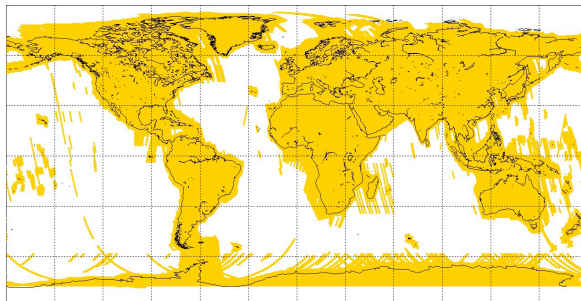
Observation results

Duration: 2006/5/16 (CAL/VAL) ~ 2008/3/8 (17 cycles)

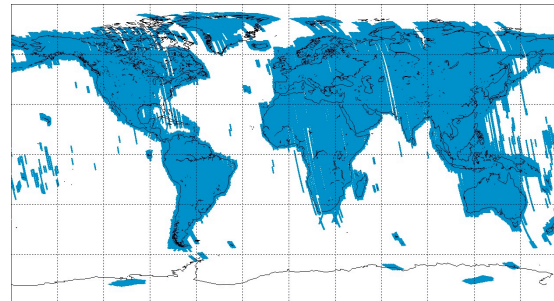
Following images contains all the operation modes.

	<b>Total number of scenes</b>	<b>Cloudless scenes</b>
PRISM	918, 144	316, 351
AVNIR-2	418, 092	127, 341
PALSAR	723, 801	—

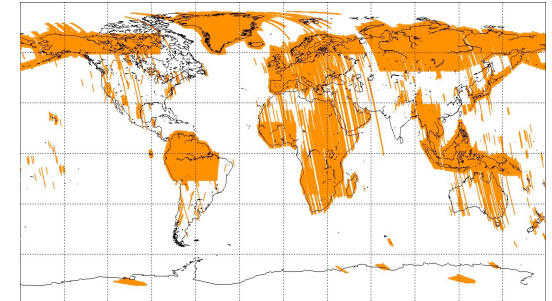
8 times global covers by PALSAR.



**FBS**



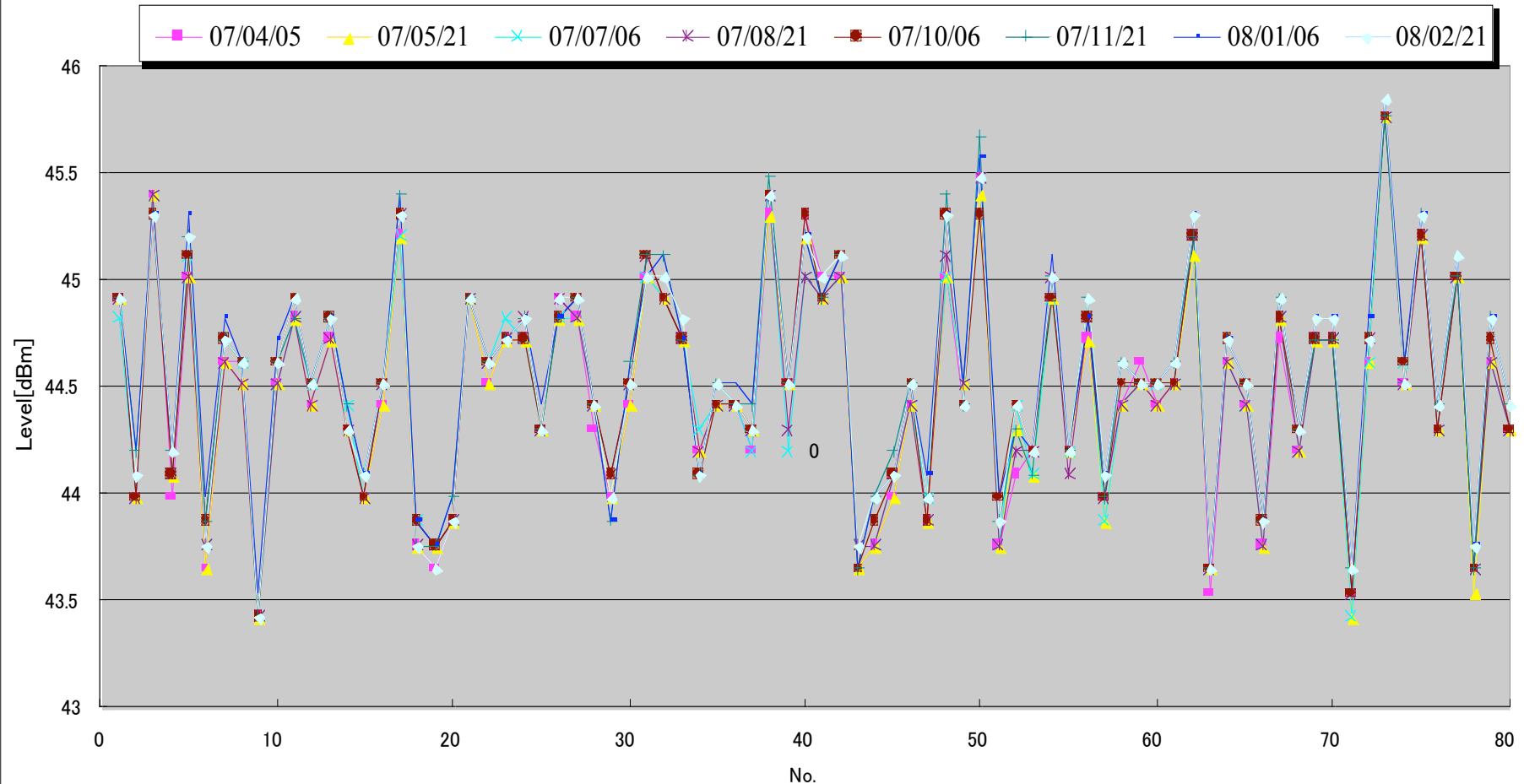
**FBD**



**PLR**

# PALSAR Status **PALSAR is very stable.**

## PALSAR Transmission power monitor



### PALSAR Power monitor results (80 T/R modules)

- Total Power  $\geq 2200W$  (Spec=2000W)
- No degradation measured.

# 1)ALOS-TDRScommunication test



1. Goal : communication test between ALOS and TDRS

2. Plan ALOS-TDRS(F-10) communication test (Ka)

ALOS->TDRS F-10 ->WSC ->ASF

3.Schedule May 29 2008 3 passes(June 5 ,3 passes(backup))

(Data : P N , P A L S A R , A V N I R - 2)

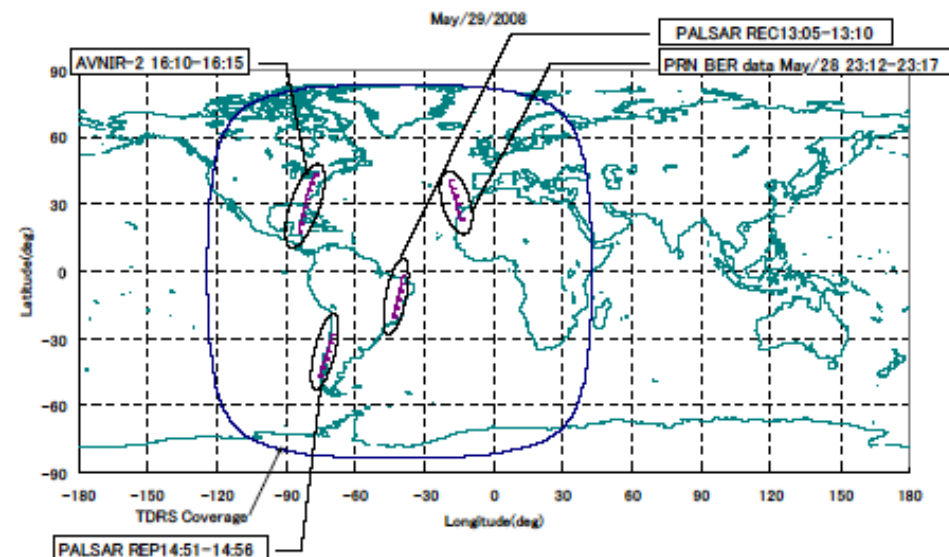
(White Sands Complex)

(Alaska Satellite Facility)

## 2)Orbit maneuver

June beginning: maintain the orbital plane (inclination)

> tuning the inclination.



# Amazon Deforest Watch (Mato Grosso) JERS-1 & ALOS

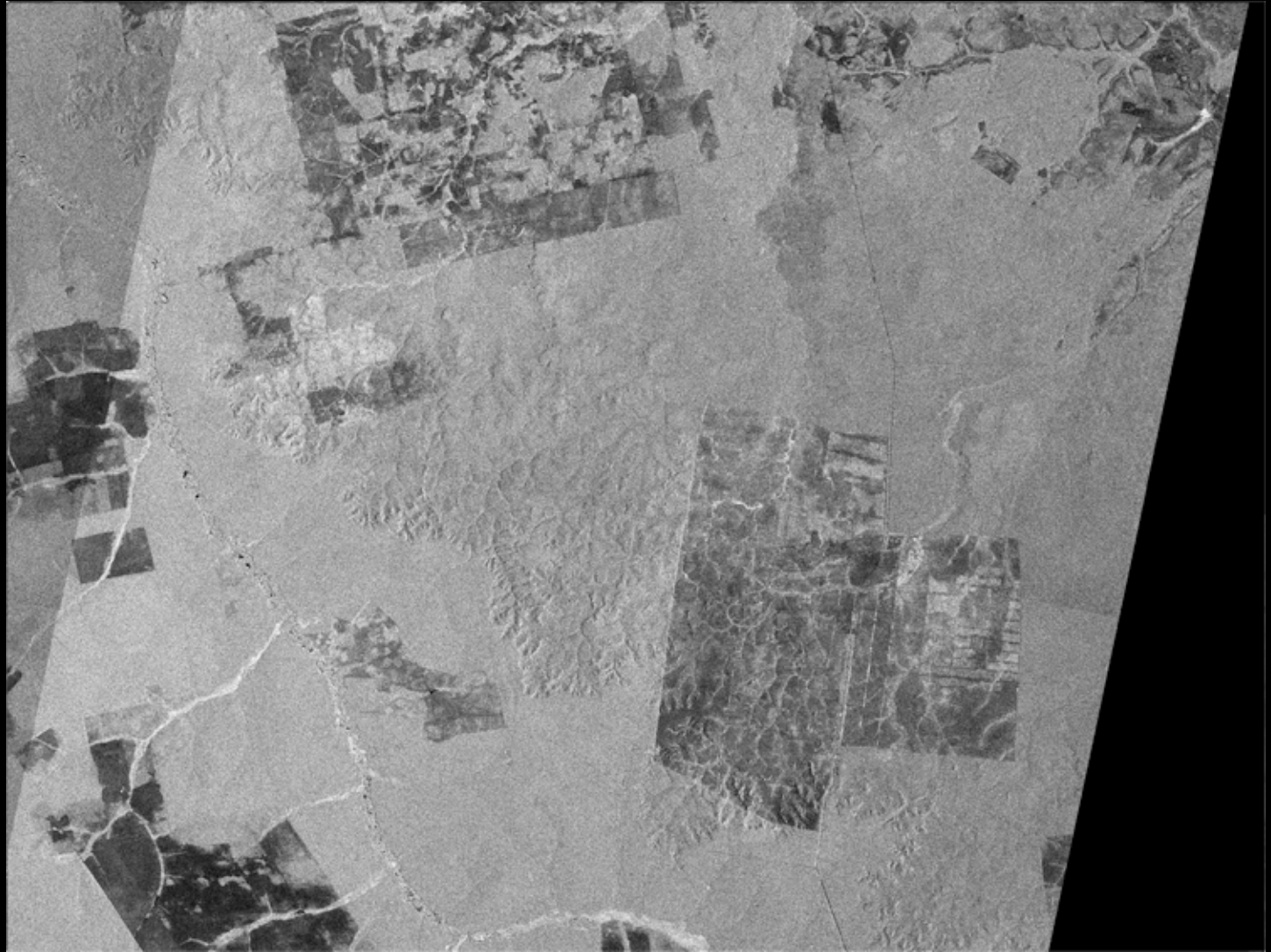
## Acquisition Term

1992/11/9  
~2007/6/25

JERS-1  
•1992/11/9  
•1992/11/10  
•1996/5/8  
•1996/5/9

ALOS  
•2006/8/12  
•2007/6/25

Lat : S 2°34'  
Lon : W 54°45'



# Amazon Deforest Watch (Mato Grosso) JERS-1 & ALOS

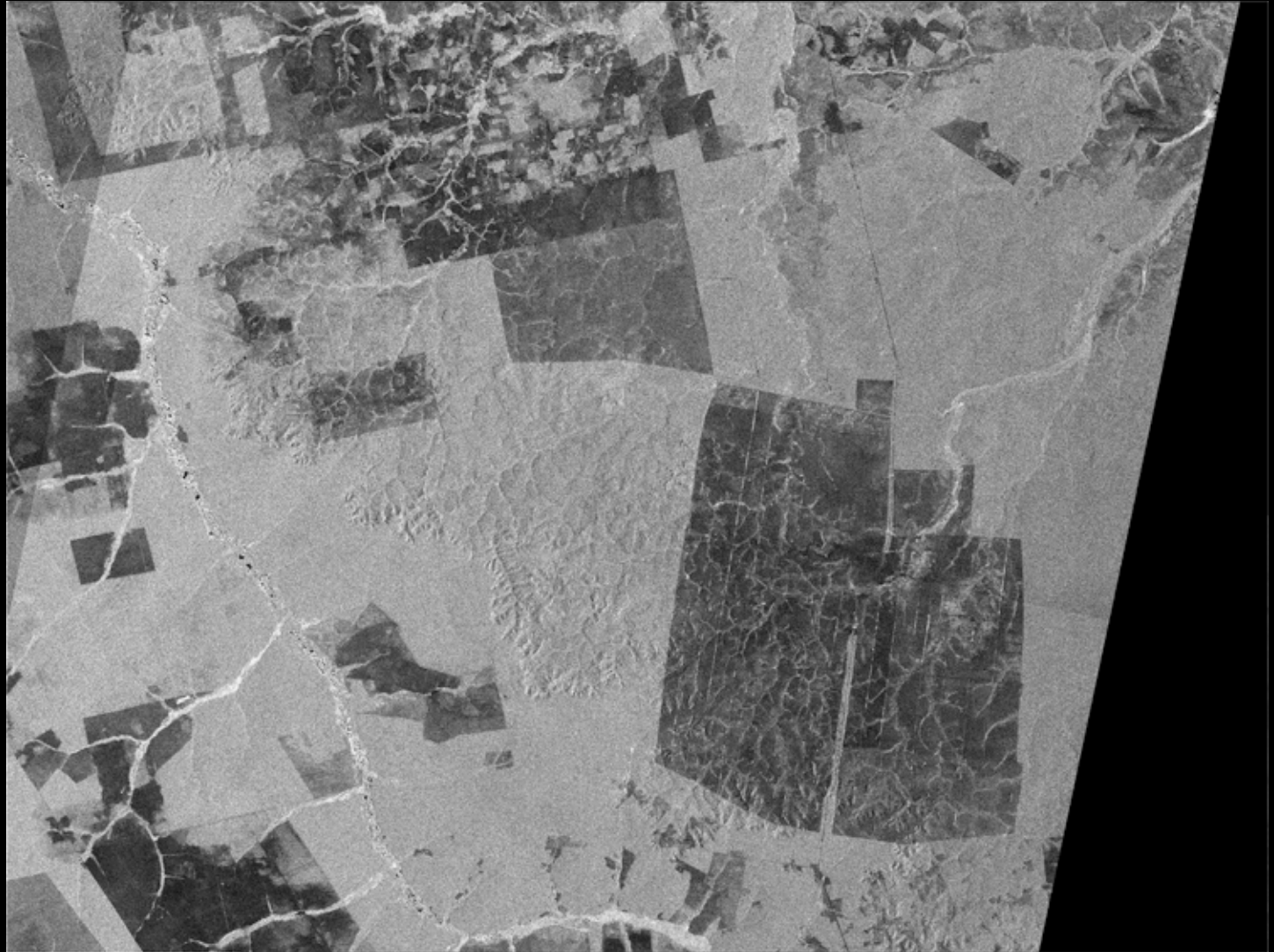
## Acquisition Term

1992/11/9  
~2007/6/25

JERS-1  
•1992/11/9  
•1992/11/10  
•1996/5/8  
•1996/5/9

ALOS  
•2006/8/12  
•2007/6/25

Lat : S 2°34'  
Lon : W 54°45'



# Amazon Deforest Watch (Mato Grosso) JERS-1 & ALOS

## Acquisition Term

1992/11/9  
~2007/6/25

JERS-1  
•1992/11/9  
•1992/11/10  
•1996/5/8  
•1996/5/9

ALOS  
•2006/8/12  
•2007/6/25

Lat : S 2°34'  
Lon : W 54°45'





# Amazon Deforest Watch (Mato Grosso) JERS-1 & ALOS

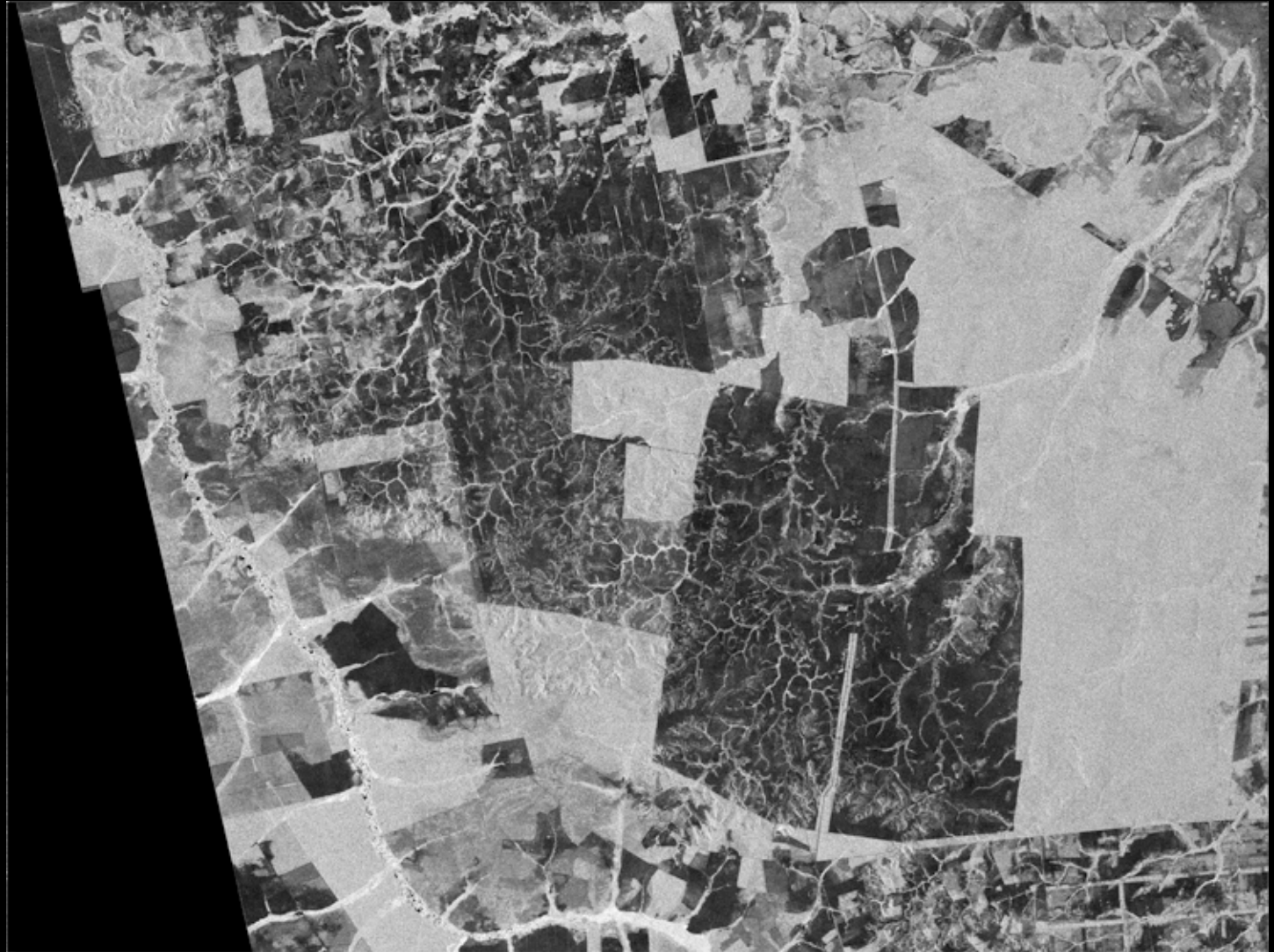
## Acquisition Term

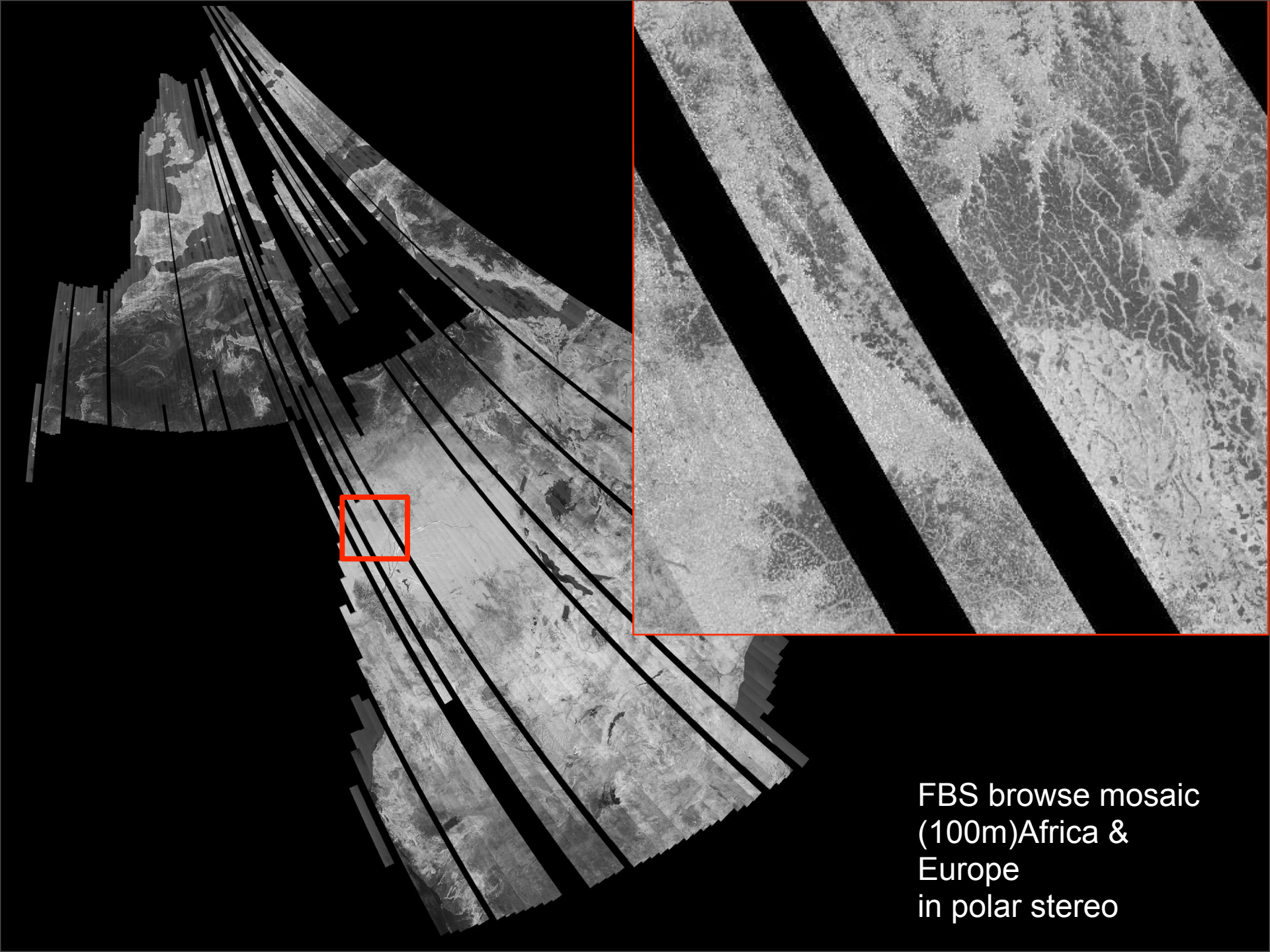
1992/11/9  
~2007/6/25

JERS-1  
•1992/11/9  
•1992/11/10  
•1996/5/8  
•1996/5/9

ALOS  
•2006/8/12  
•2007/6/25

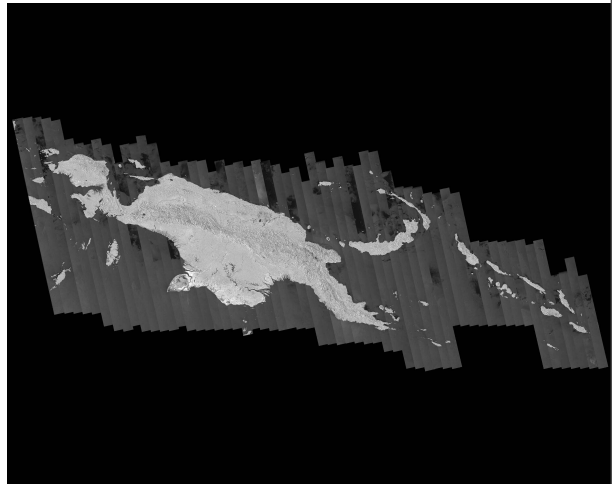
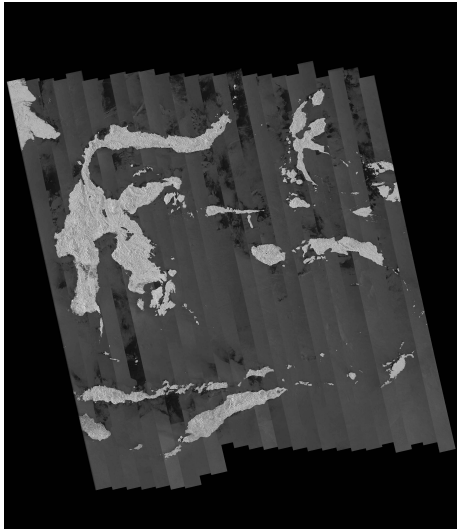
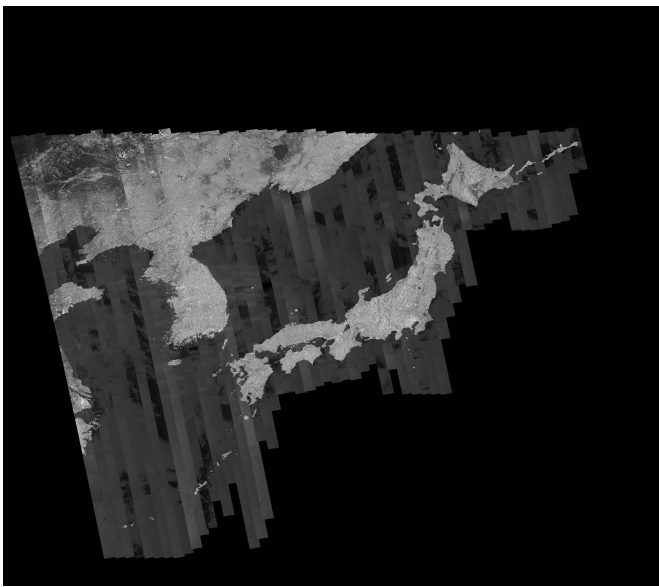
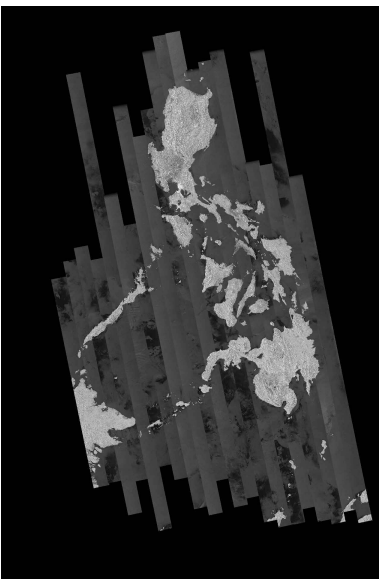
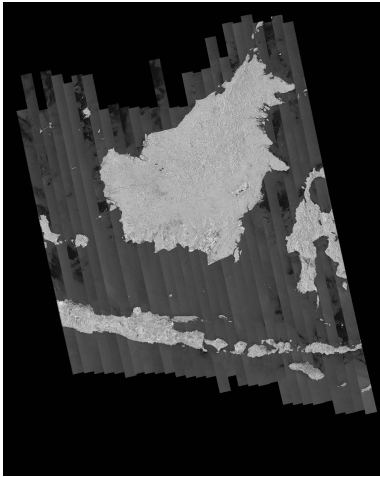
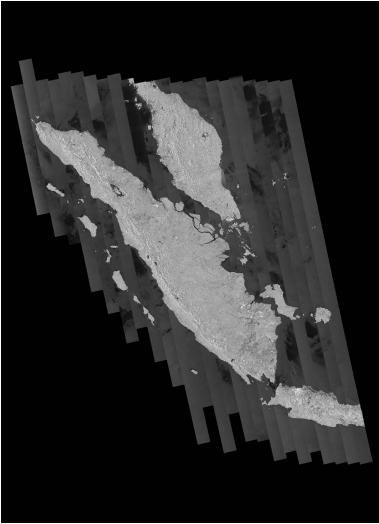
Lat : S 2°34'  
Lon : W 54°45'



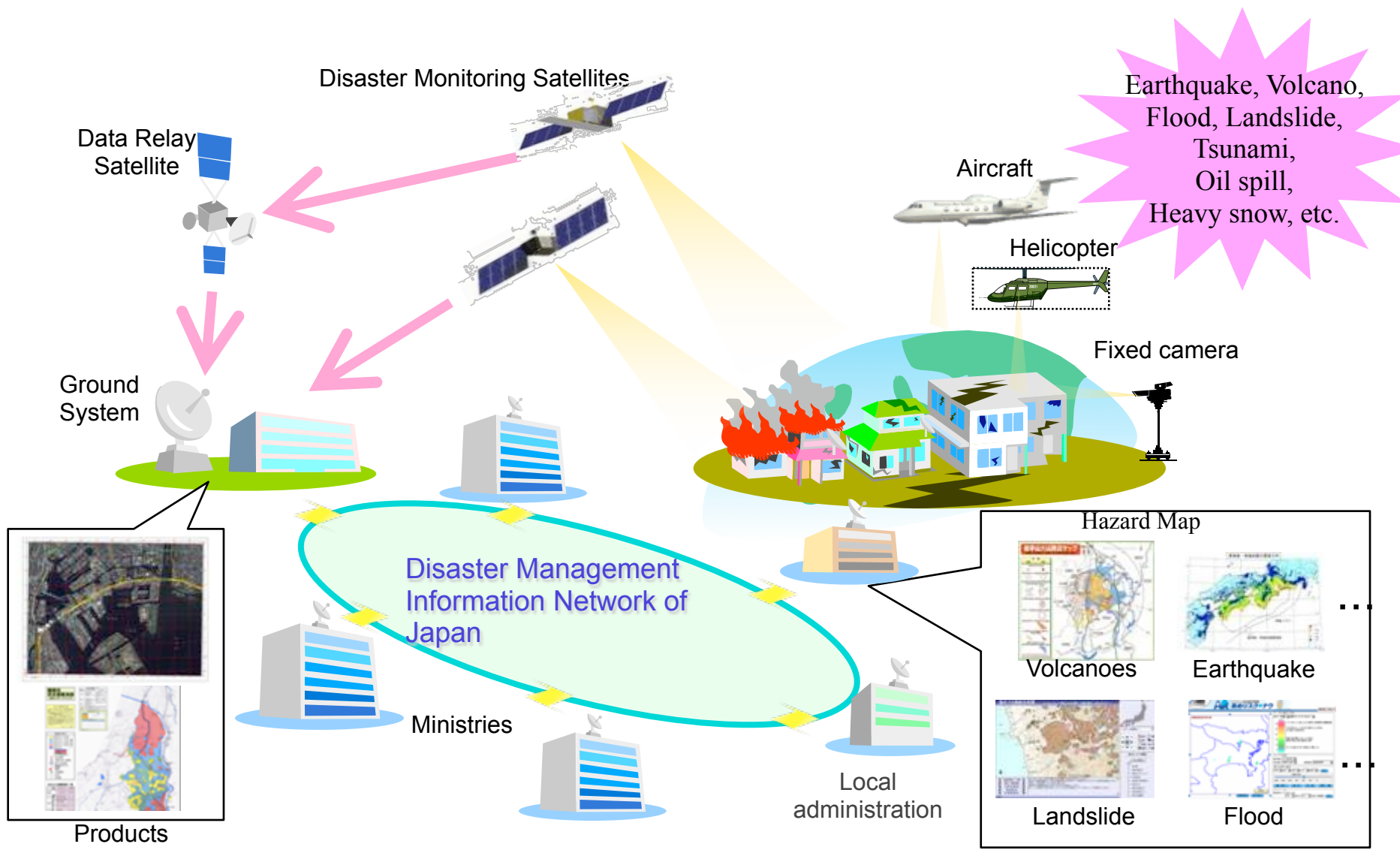


FBS browse mosaic  
(100m)Africa &  
Europe  
in polar stereo

# Current Mosaic products



# Disaster Monitoring System



# Core System (2 SAR + 2 OPT)

- **Satellite**

- SAR satellite

- GSD: 3m (strip map), 3m\*1m (spotlight)
    - Swath: 50km
    - L-band

- Optical satellite

- GSD: 1m (Pan), 4m (Multi-spectral)
    - Swath: 50km

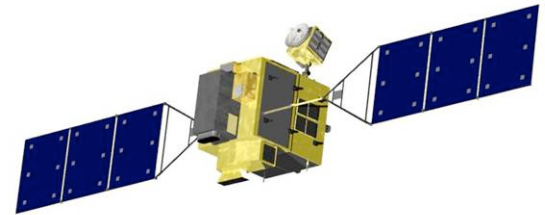
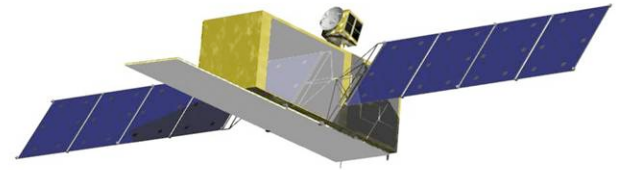
- First satellite: launch target JFY2012

- **Ground System**

- Quick response

- Quick tasking (less than 1 hour)
    - Quick data processing and analysis (less than 1 hour for standard proc.)

- Compatible with the existing information systems of Japanese governmental users



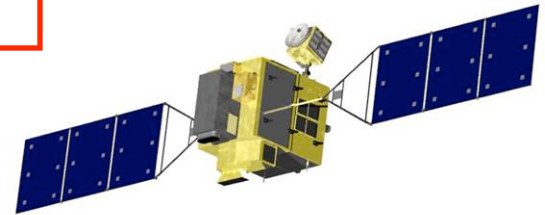
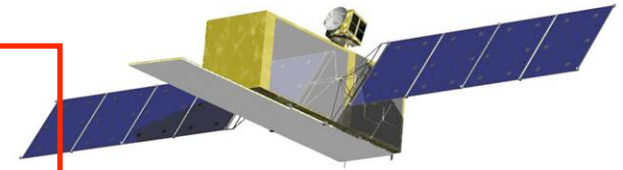
# Core System (2 SAR + 2 OPT)

- **Satellite**

- SAR satellite
  - GSD: 3m (strip map), 3m\*1m (spotlight)
  - Swath: 50km
  - L-band
- Optical satellite
  - GSD: 1m (Pan), 4m (Multi-spectral)
  - Swath: 50km
- First satellite: launch target JFY2012

- **Ground System**

- Quick response
  - Quick tasking (less than 1 hour)
  - Quick data processing and analysis (less than 1 hour for standard proc.)
- Compatible with the existing information systems of Japanese governmental users



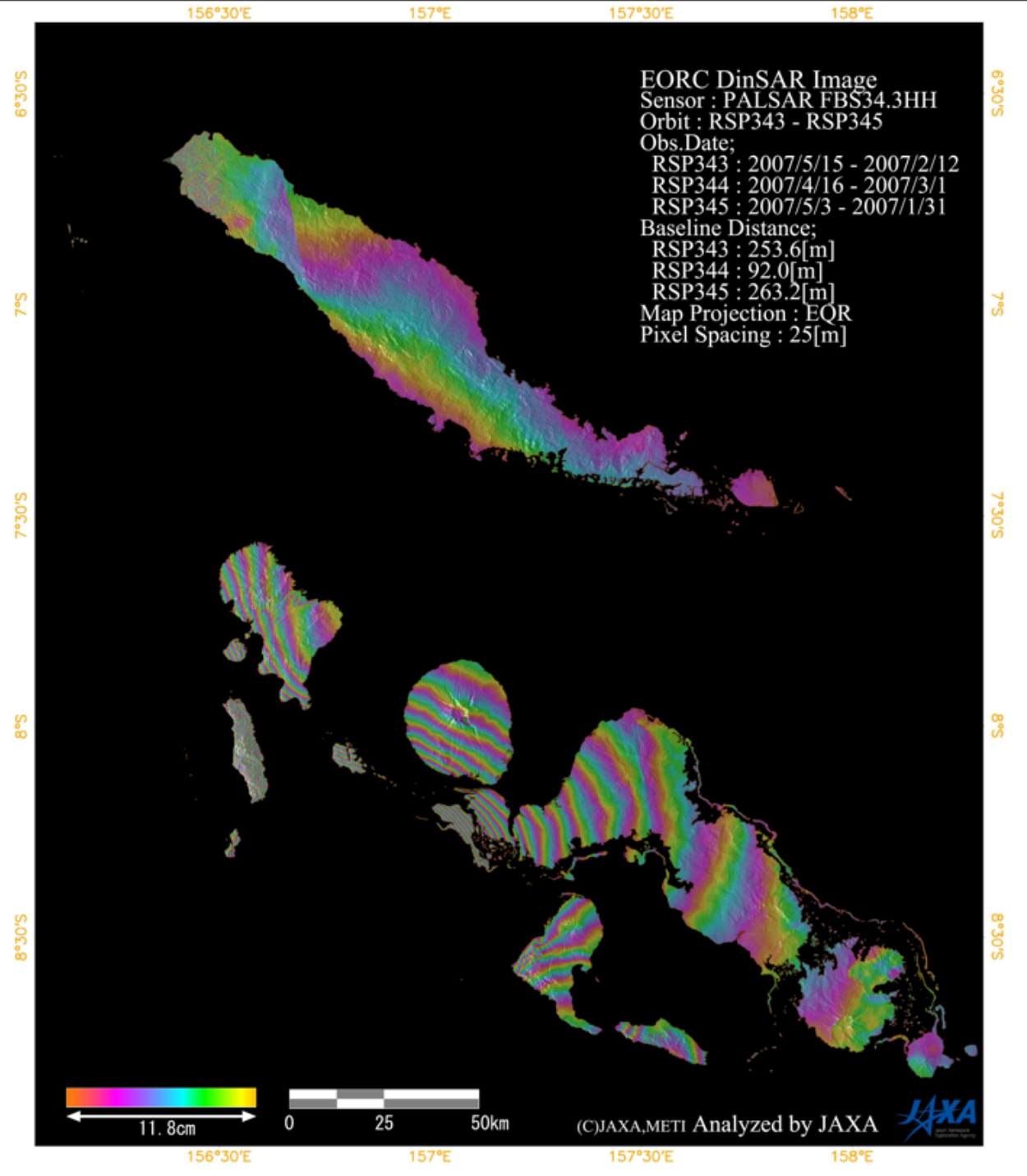
# Solomon Earthquake

M8.1  
April 2 2007

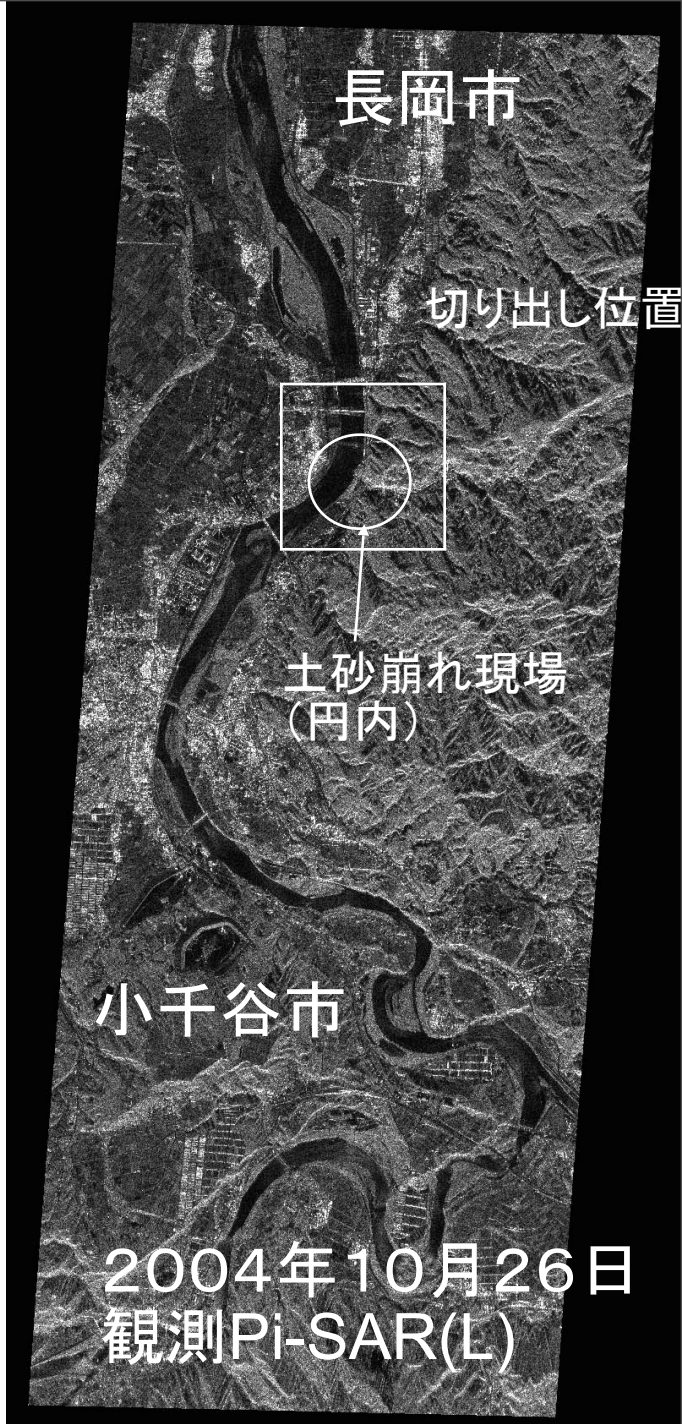
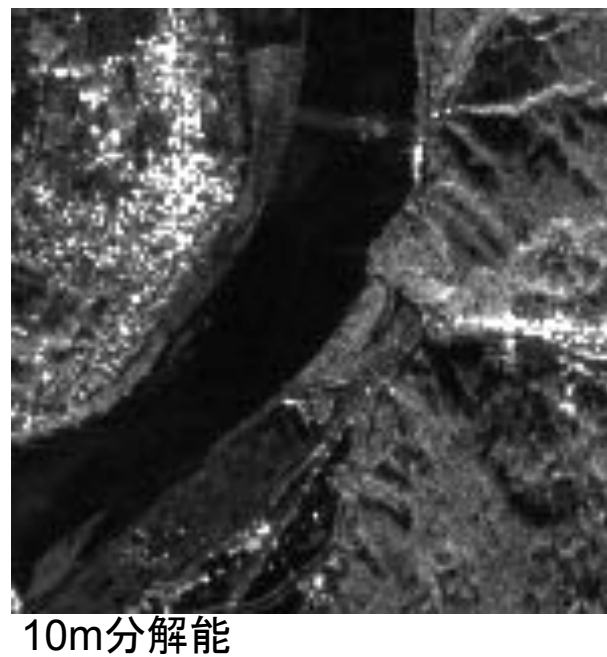
Three DinSAR  
344:4/10-2/23  
345:5/3-1/31  
343:5/10-2/12

FBS343HH

No orbit tuned.  
No further corrected.  
Three paths overlaid.



# Land slide of Chuetsu Earthquake 2004





# Requirements to the SAR missions

- **Change detections**

- InSAR - Orbital maintenance (500m tube and frequent inclination maintenance)

- coherence amplitude / phase change

- Polarizations

- First Target

Deformation, flooding, volcano, land slide, subsiding, forest fire, etc.

-> High resolution, good NESZ -> High quality SAR

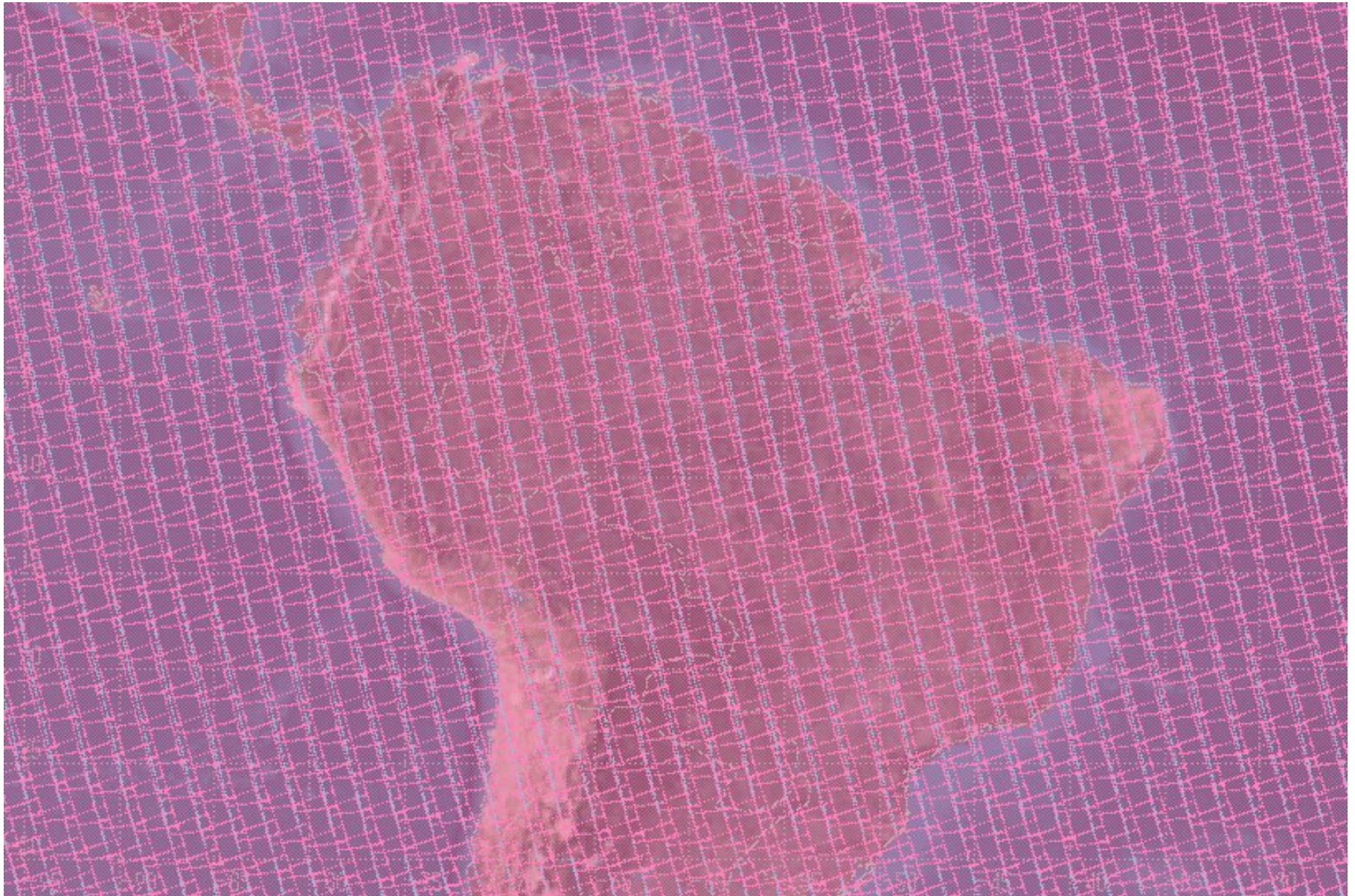
- Second target

Forest and wetland

-> PALSAR performance + adding HV -> Mid-quality but wide swath SAR

## SAR Parameters (Under discussion)

Frequency	:	L band
BW	:	<85MHz, 42MHz, 28 MHz
Modes	:	Spot light, Strip, SCANSAR
Pr	:	<6Kw
Swath	:	50 km ~ 70 km, 300km(SCAN)
Pol.	:	HH, HH+HV, HH+HV+VH+VV
Resolution	:	1m, 3m, ~PALSAR(5m), 1 look
Data rate	:	< 800 Mbps
Orbit revisit	:	14 days, 628 km (14+3/14)
Bit	:	4 bit I&Q, 2 bit I&Q(BASQ)
Incidence	:	7 deg. ~ 70 deg. (30 ~ 45 deg. for forest)
DRTS	:	TBD (under discussion)
NESZ	:	<-28 dB (20~40 degrees)
Amb (Rg, Az):	:	>23 dB
Dual beams	:	Yes ( 1, 3 meter size)
Look dir.	:	Right and Left



Amazon mapping in ascending (each swath 30~45<sup>15</sup> deg.)

## Conclusions

- 1) Forest monitoring using the PALSAR is ongoing.  
PALSAR is in good condition.  
More than 10 years life (fuel) expected.
  
- 2) ALOS follow-on satellite system is under designing.  
Missions:
  - + ) Disaster mitigation (flooding, deformation, earthquake, volcanoes,,)
  - + ) Forest and wetland monitoring
  
- 3) L-band SARs (JERS-1, PALSAR, ALOS follow-on) will contribute the change detection for the forest.

JERS-1 : 568 km, 44 days

ALOS : 691.5 km height: 46 days revisit

ALOS follow-on: 628 km height, 14 days revisit