

GEOSS Asia-Pacific Symposium  
4th Parallel Session

**Mapping Forests and Tracking Carbon**

April 15 (Tue)  
Room XX

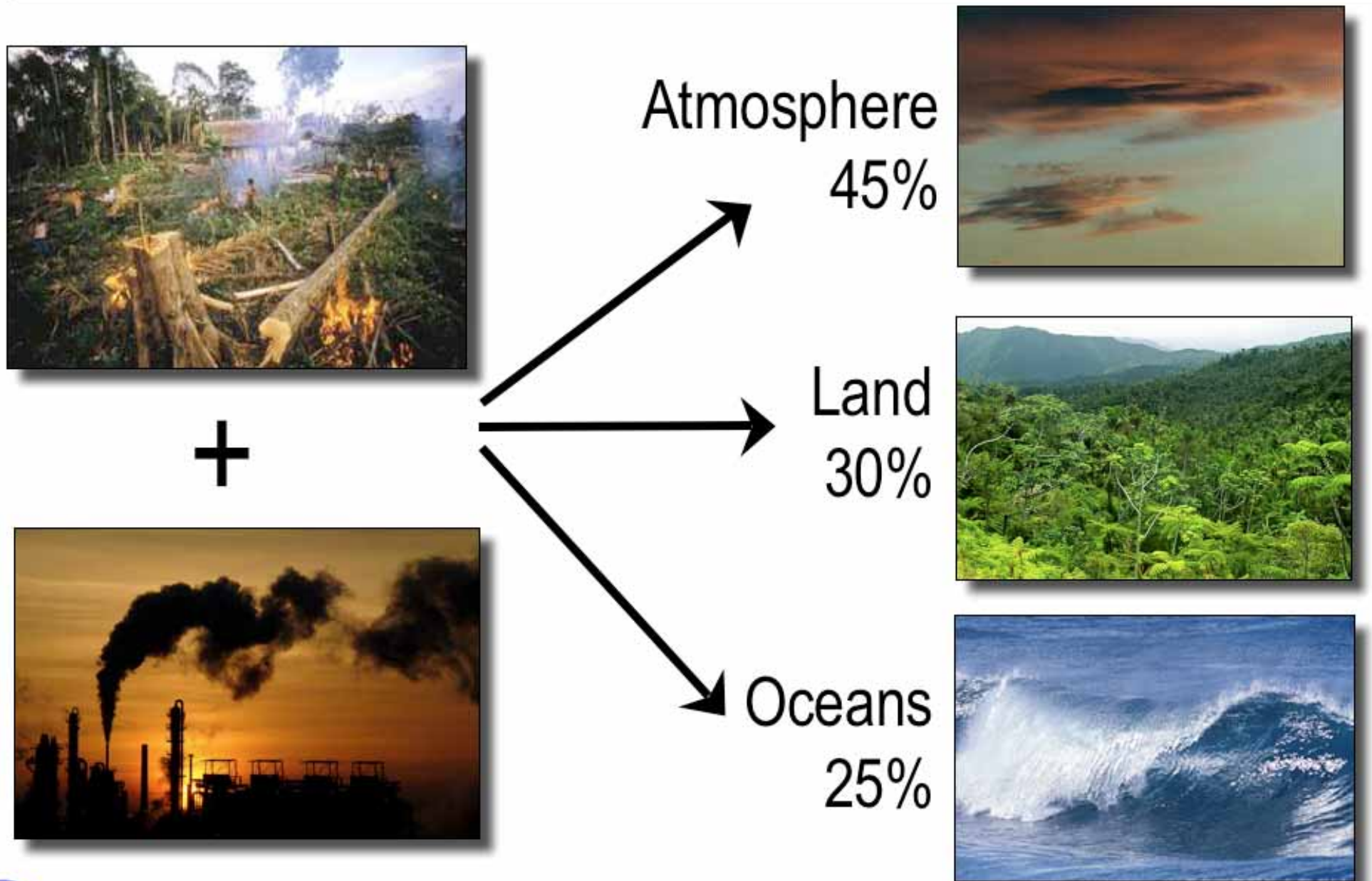
Chairs:

Yoshiki Yamagata,  
National Inst. for Environmental Studies (NIES)

&

Ake Rosenqvist  
European Commission JRC

# Fate of Anthropogenic CO<sub>2</sub> Emissions



# Trees are worth more dead than alive



Tropical deforestation

**13 Million hectares** each year

2000-2005



Tropical Americas 0.6 Pg C y<sup>-1</sup>

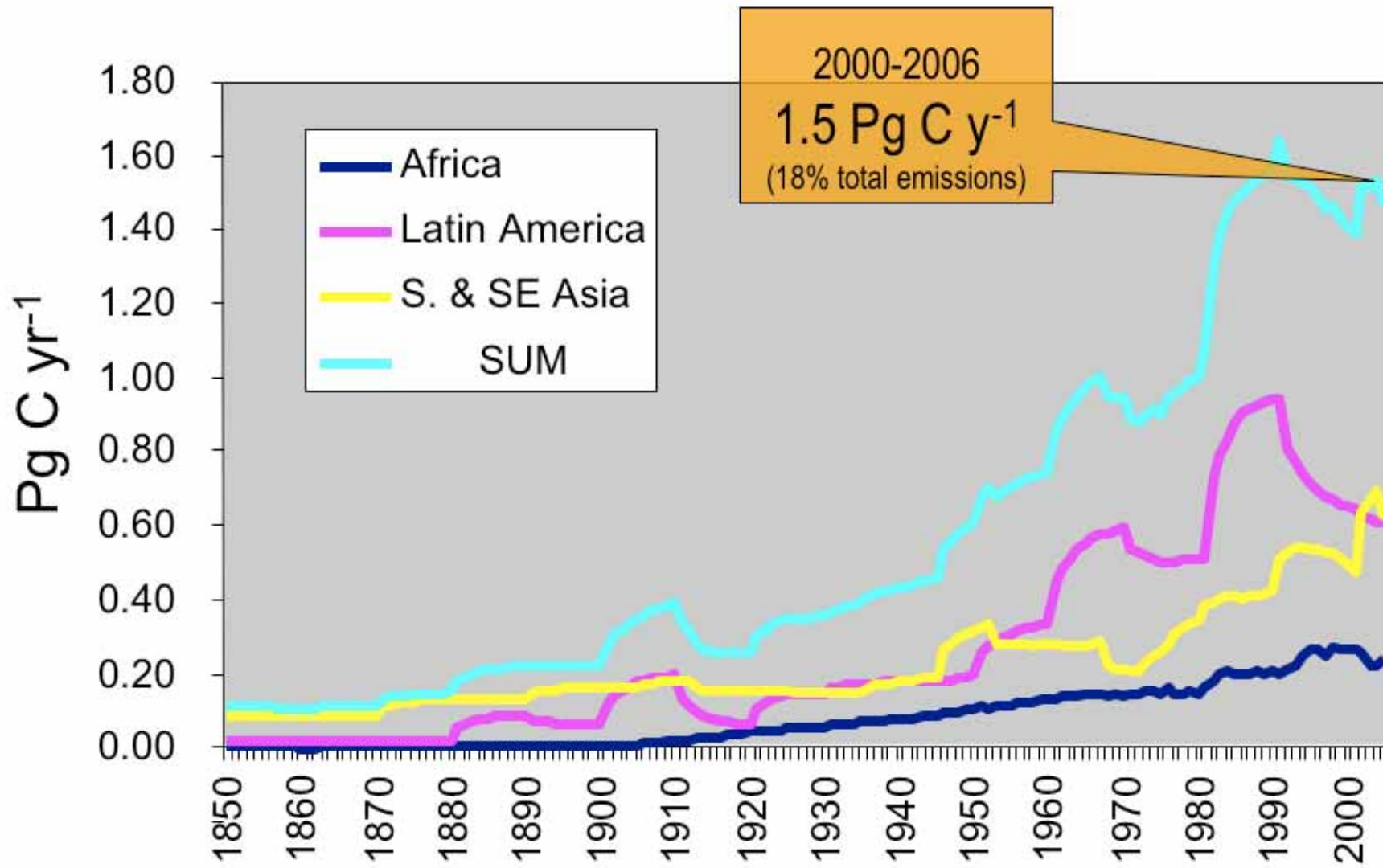
Tropical Asia 0.6 Pg C y<sup>-1</sup>

Tropical Africa 0.3 Pg C y<sup>-1</sup>

**1.5 Pg C y<sup>-1</sup>**

# Anthropogenic C Emissions: Land Use Change

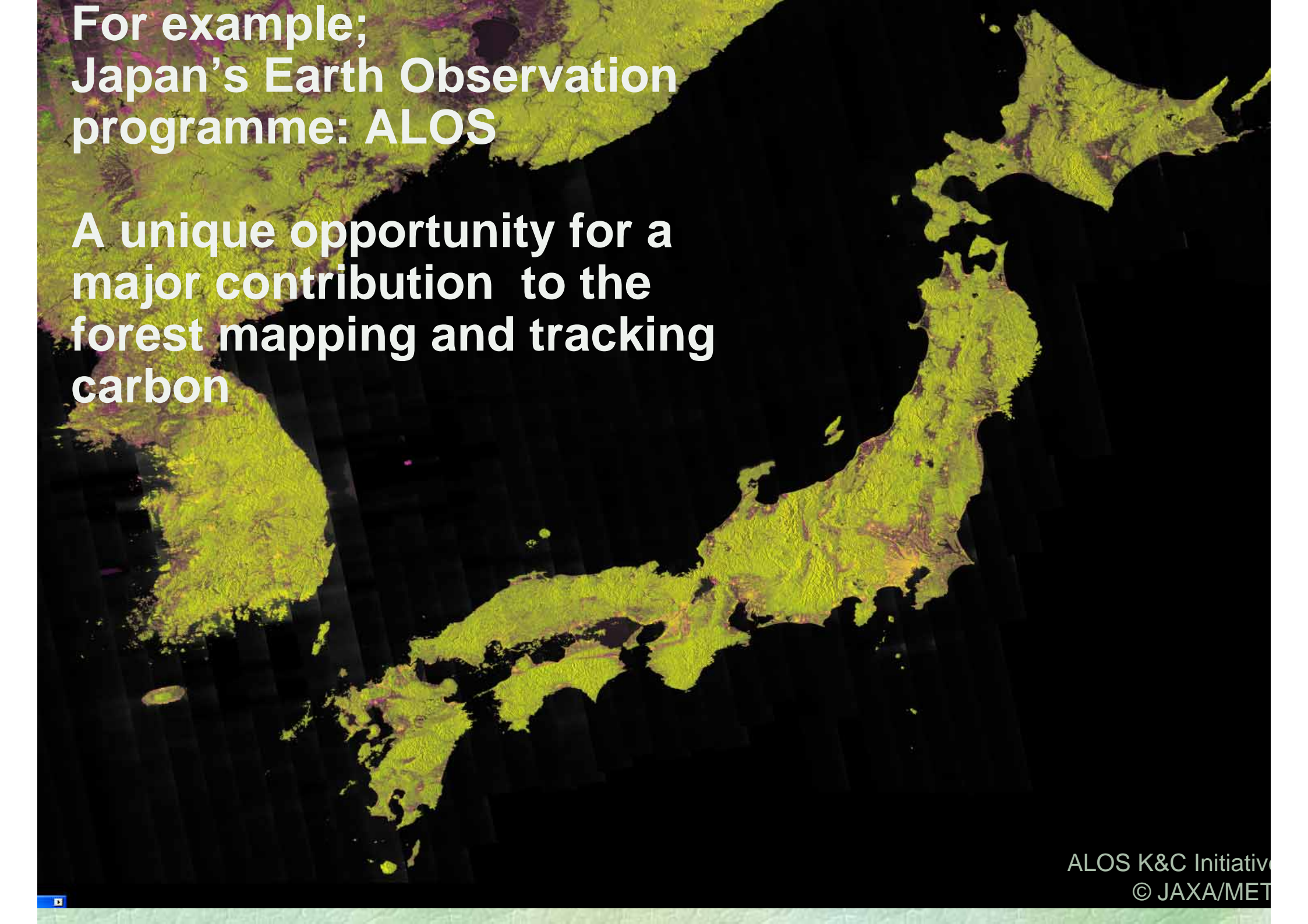
## Carbon Emissions from Tropical Deforestation



Houghton, unpublished; Canadell et al. 2007, PNAS

# Critical requirements for systematic ES strategies

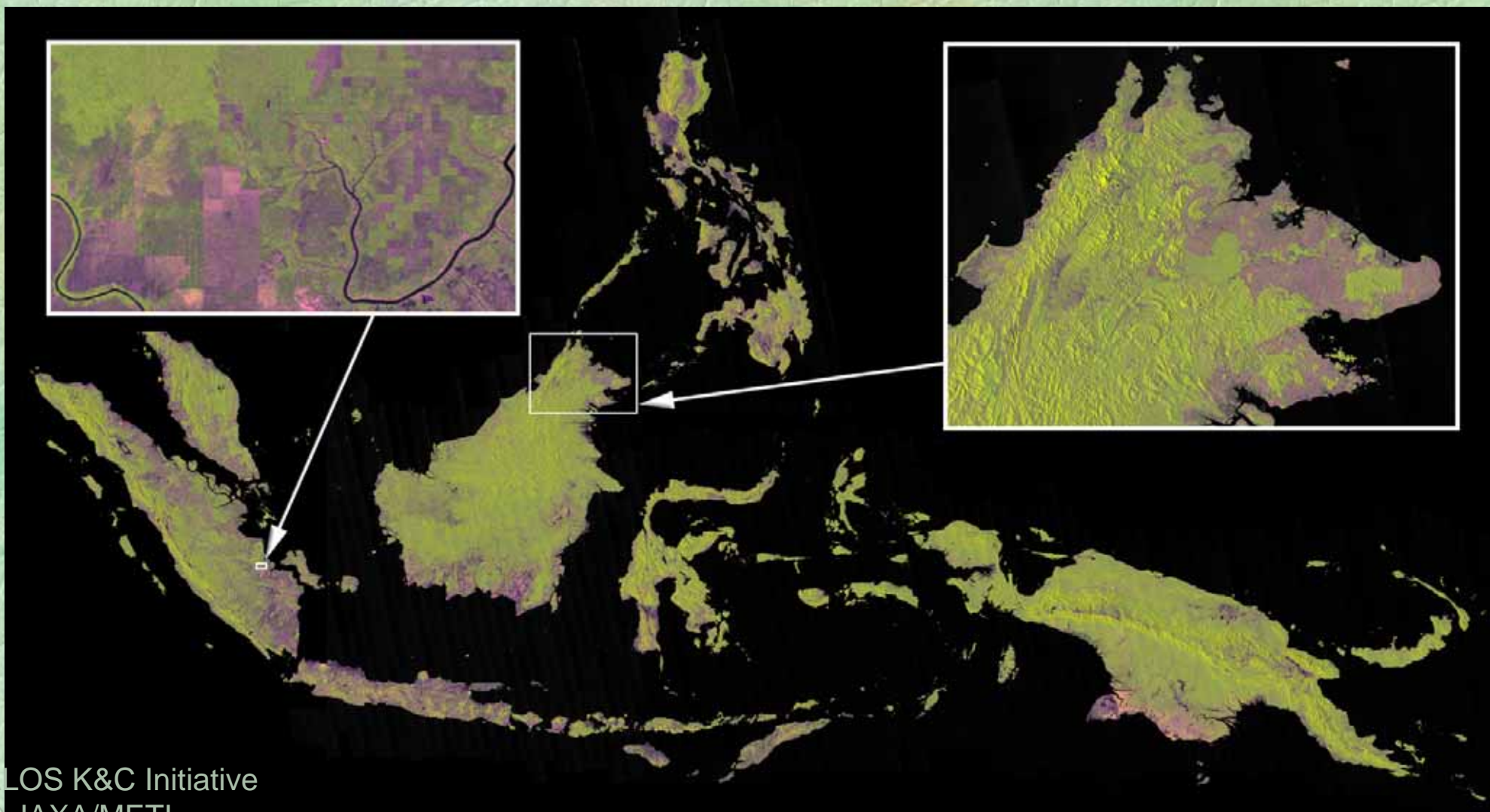
1. **Spatial (wall-to-wall) consistency** over regional scales;
2. **Temporal consistency** over regional scales;
3. "Adequate" temporal repetition;
5. Consistent sensor configuration;
6. **Long-term continuity.**



**For example;  
Japan's Earth Observation  
programme: ALOS**

**A unique opportunity for a  
major contribution to the  
forest mapping and tracking  
carbon**

ALOS/PALSAR can detect land use changes:  
Semi-annual, national level wall-to-wall  
coverage at fine resolution



# Mapping Forests and Carbon

## Session objectives (1/3)

- Address the need for **integrated observations** from diverse instruments and from various fields
- Overview of the available **tools and methodologies** for forest monitoring and tracking of carbon
- Address the requirements for **systematic satellite observations.**



# Mapping Forests and Carbon

## Session objectives (2/3)

- Overview of **on-going activities** for addressing the issue at different geographical levels
- Inputs for a strong **GEO initiative** on this subject
- Discuss **implementation aspects** of GEO initiative, and identify potential contributors.

# Mapping Forests and Carbon

## Session overview (2/3)

- **GEO Workplan** Tasks Working on Forest Mapping and Carbon Tracking
- **Global Observations** - Requirements and contributions
- **Initiatives and projects** on Carbon Monitoring
- **Round table:** How GEOSS could support global carbon measurements